

Using Excel for a quick fit

The X-Y scatter plot below was created using Microsoft Excel.

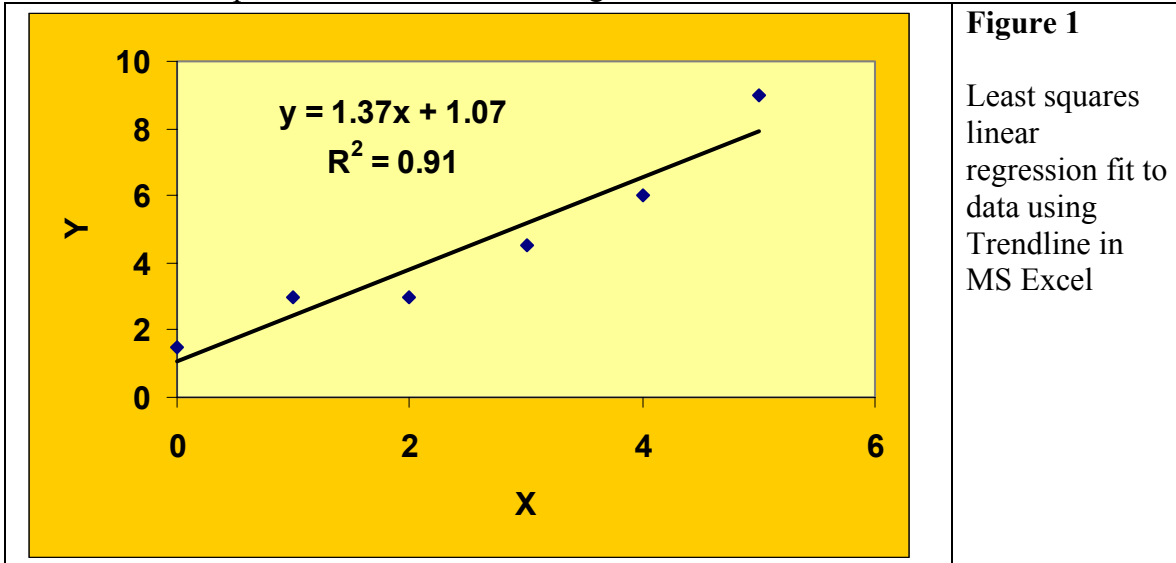
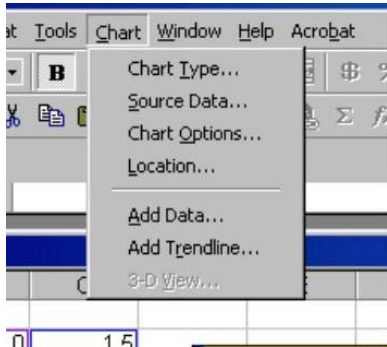


Figure 1
Least squares linear regression fit to data using Trendline in MS Excel

The least squares linear regression line and equation were then added using the **Add Trendline** command of the **Chart** menu (you must click on the chart to select it before the **Chart** menu becomes available).



For a linear regression choose the Linear box. You may want to use other least squares fits for your particular data. Click on the option tab and the select the bottom two boxes to display the equation and the fraction of the total variance explained by regression, R^2 , on your graph. The text of these equations can be edited to give appropriate names and significant figures.

