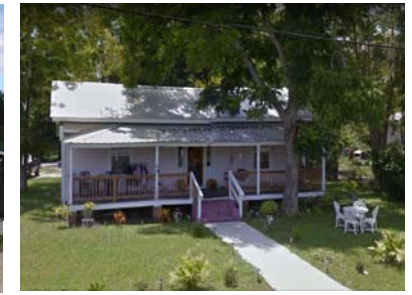


Vernacular Characteristics of the Apalachicola Hill Community



Porches

A fundamental aspect of social life and respite from the hot Florida weather, porches are an integral part of houses in the Hill



Wood

Houses in the Hill are built almost exclusively in wood, with clapboard siding being a predominant feature. Very few structures anywhere in the historic district are constructed using masonry, with the exceptions typically being religious/civic buildings.



Metal Roofs

A ubiquitous characteristic found in both new and old construction throughout the Hill, metal roofing practically defines the historic district.



Styles

Shotgun houses, once a dominant style in the Hill, have dwindled and now number only about 30. Other styles present include bungalow, and American Foursquare.

