

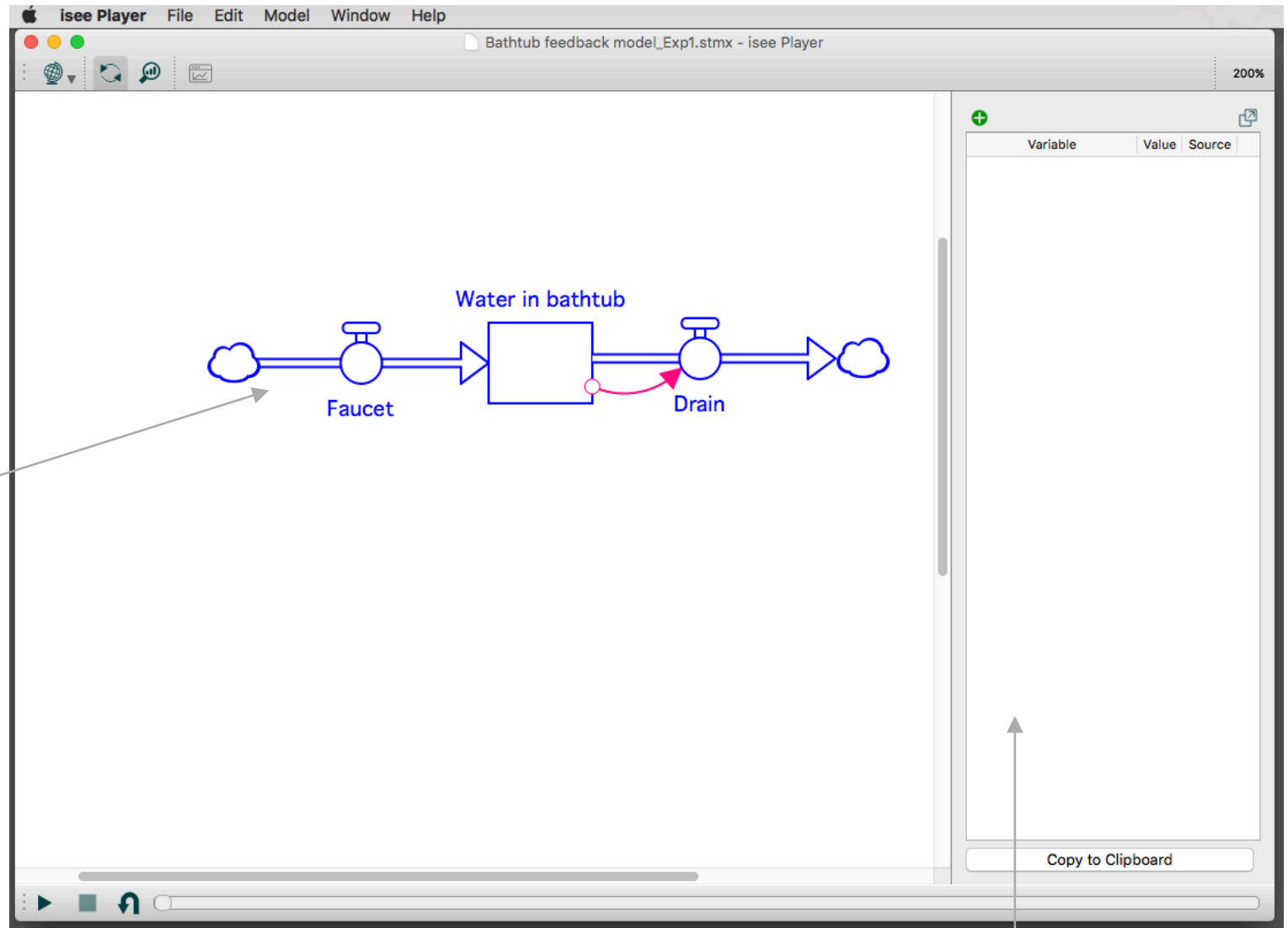
Systems Thinking: Systems modeling feedback quick start

Bathtub Feedback Model_Exp1 quick start instructions

- Once you have installed Player (or STELLA) software, download the Bathtub Feedback Model_Exp1
- Open the file in Player (or STELLA)

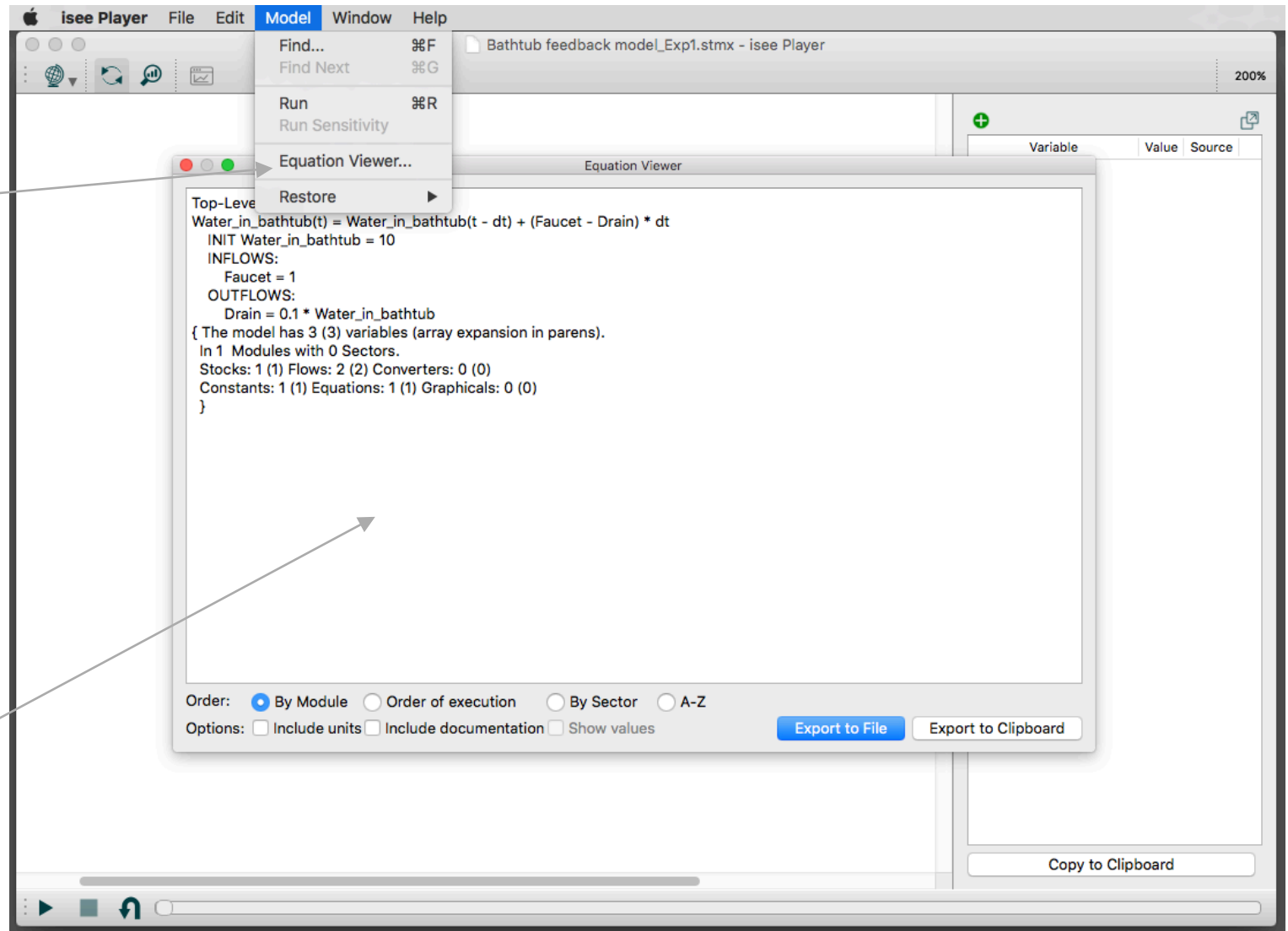
This is what you should see when the model opens in Player.

Graphical depiction of the model



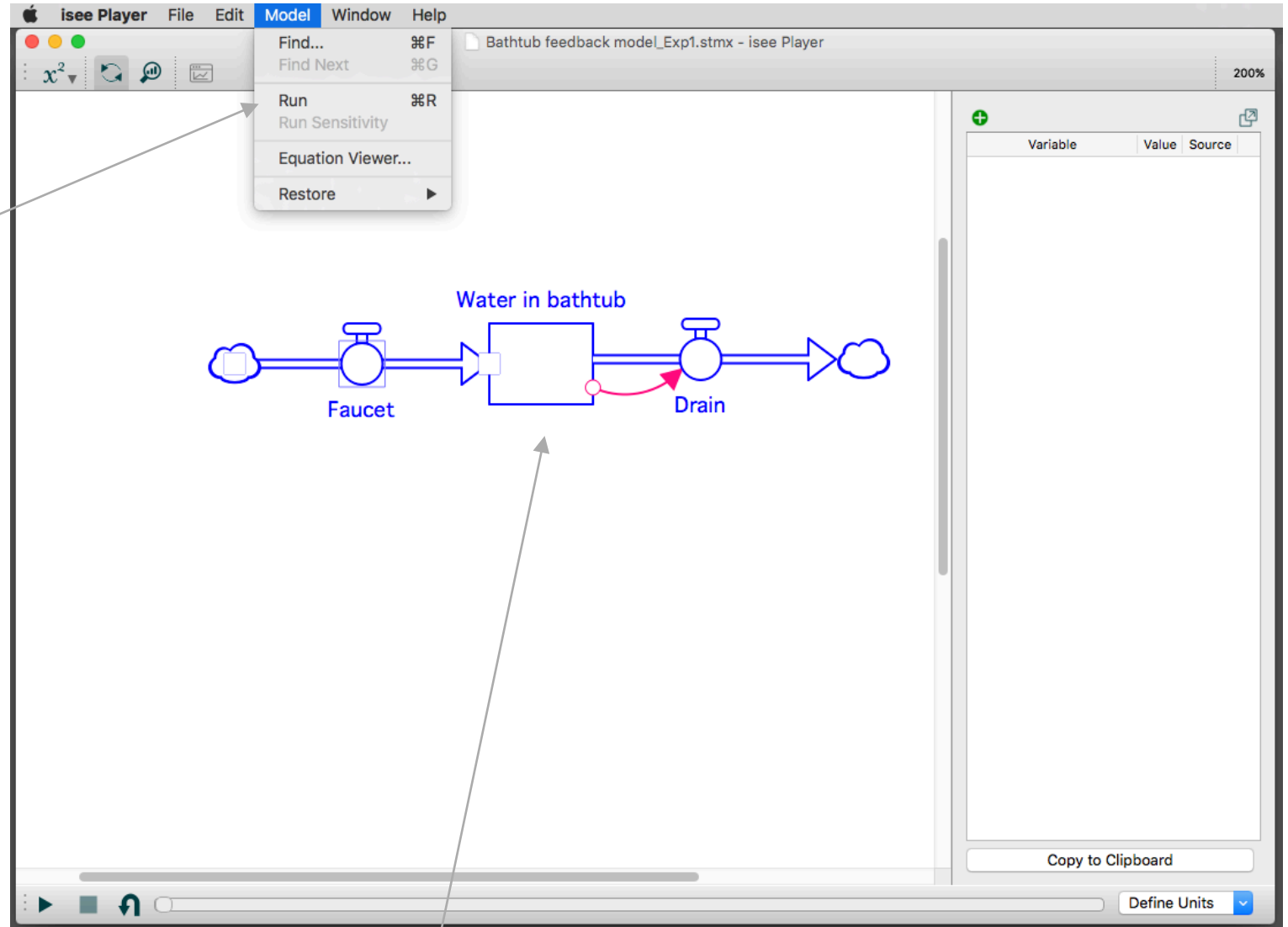
Parameter control panel

You can view the equations that form the model by selecting Equation Viewer in the Model menu



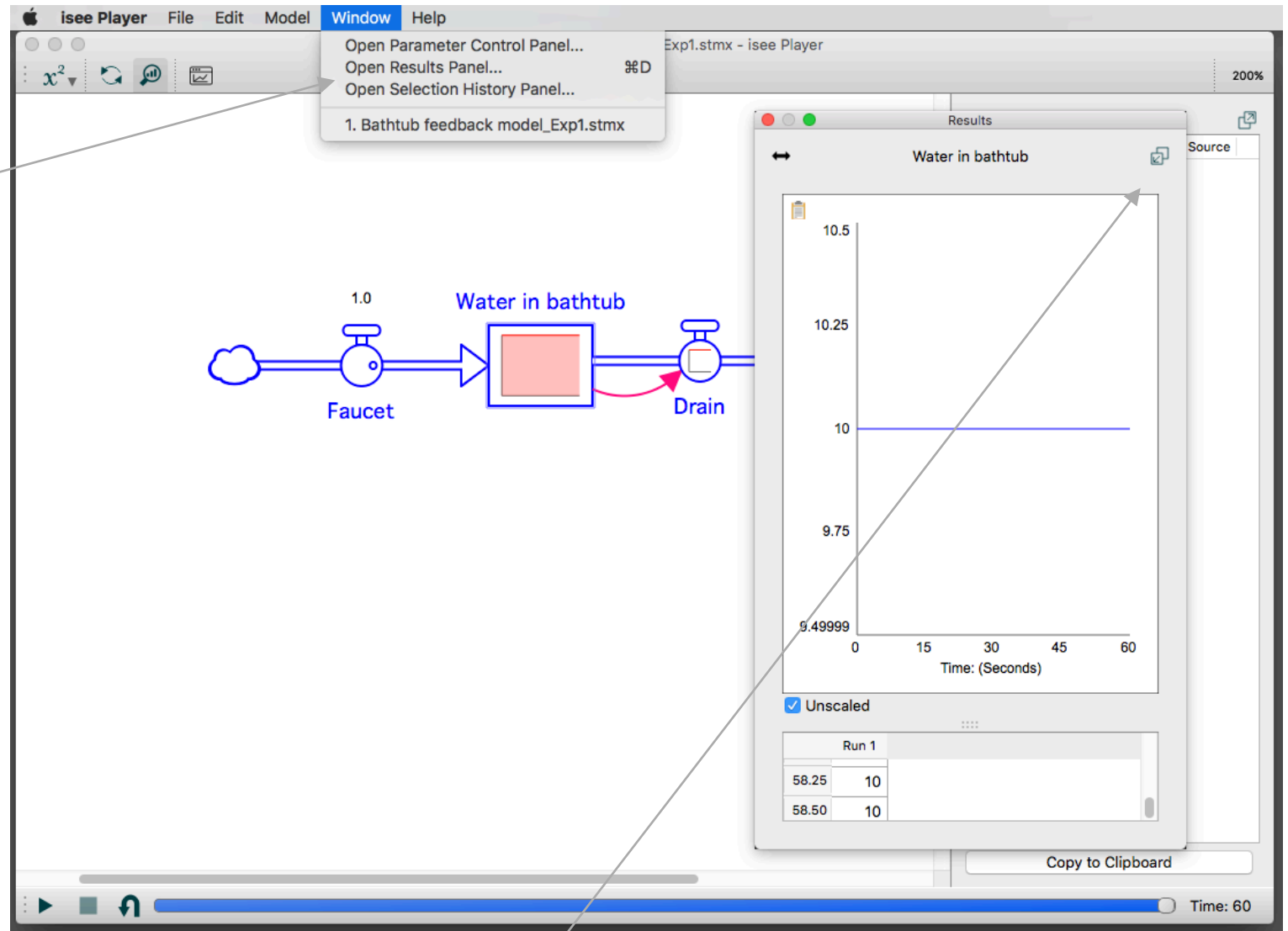
Equation Viewer

To run the model, either click the play button or select Run from the Model menu



As the model runs, you will see the reservoir (Water in Bathtub) change graphically

To view the results, open the Results panel from the Window menu



Results panel -
Click on the combine icon to merge with the Parameter Control panel

To make the model variables interactive (i.e., you can change them), click the green plus in the Parameter Control panel

Then select the variables you want to change

The screenshot shows the iSee Player interface for a model named "Bathtub feedback model_Exp1.stmx". The main workspace contains a diagram of a bathtub system. It starts with a cloud representing an inlet, followed by a "Faucet" block with a value of 1.0. An arrow labeled "Water in bathtub" points to a central red square representing the bathtub. From the bathtub, an arrow labeled "Drain" points to another cloud representing an outlet. A red curved arrow also points from the bathtub to the "Drain" block. On the right side of the interface is a "Parameter Control" panel with a green plus sign at the top. Below the plus sign is a table with columns for "Variable", "Value", and "Source". At the bottom of this panel are buttons for "Results" and "Parameters", and a "Copy to Clipboard" button. A dialog box titled "Click to select a variable" is open in the center, with the text "Select a variable to control...". It contains a search field and a list of variables: "Water in bathtub", "Drain", and "Faucet". Below the list are "Show:" and "Order:" options. The "Show:" options are checkboxes for "Water in bathtub" (checked), "Drain" (checked), and "Faucet" (unchecked). The "Order:" options are radio buttons for "By module" (checked), "By type" (unchecked), and "A-Z" (unchecked). At the bottom of the iSee Player window is a playback bar with a play button, a stop button, a refresh button, and a progress bar showing "Time: 60".

The variables can be changed by typing in the value column

When you run the model again, the new output will be displayed on the graph as a new run

The inputs, output, and entire model can be restored under the Model menu; you can also restore the entire model by clicking here

The screenshot shows the iSee Player interface for a 'Bathtub feedback model_Exp1.stmx'. The main workspace contains a diagram with a 'Faucet' block (value 1.0) and a 'Water in bathtub' block. A 'Results' window is open, displaying a graph of 'Water in bathtub' vs 'Time (Seconds)'. The graph shows two runs (Run 1 and Run 2) both at a value of 10. A table on the right lists variables: Faucet (1), Drain (1), and Water in bathtub (10). A 'Copy to Clipboard' button is at the bottom right. The bottom status bar shows 'Time: 60'.

Variable	Value	Source	
1 Faucet	1	Interactive	✕
2 Drain	1	Interactive	✕
3 Water in bat...	10	Interactive	✕

	Run 1	Run 2	
59.50	10	10	
59.75	10	10	