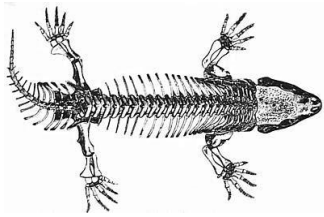


GEOL 1314 HISTORICAL GEOLOGY



Dr. Adriana E. Pérez

aperez13@utep.edu

Phone: 747-5440

GEOL 317 Office hours: TBA

INTRO TO HISTORICAL GEOLOGY

I. Catalog Description Introduction to Historical Geology (3-0) (C) An integrated study of the geologic history of the earth with a consideration of the history of life as documented by the fossil record. Concurrent enrollment in laboratory (GEOL 1104) suggested but not required. A student may not receive credit for both GEOL 1312 and GEOL 1314. Prerequisite: GEOL 1301 with a grade of "C" or better or GEOL 1313 with a grade of "C" or better.

II. Course objectives

- A. Explain the Big Bang Theory of the origin of the universe and explain the origin of the solar system and describe the characteristics of the planets.
- B. Apply the principles of relative age dating to cross sections or block diagrams.
- C. Use the radioactive decay curve to determine the age given parent/daughter data.
- D. Explain the theories on the origin and evolution of life on earth and the significance of fossils.
- E. Describe the economic value of banded iron formations, petroleum reserves and other ore deposits.
- F. Identify and use fossils and the geologic record to interpret past, present, and future environments.
- G. Correlate stratigraphic columns and recognize transgressive and regressive sequences.
- H. Describe the evolution of man.
- I. Explain the evolution of the Earth's major tectonic and paleontological features from the Precambrian to the Recent.
- J. List the eons, eras, and periods of the Geologic Time Scale.

NOTE: CLASS MATERIALS WILL BE AVAILABLE ON BLACKBOARD.

****Students who are not attending, working on their lectures/online modules/exams or turning in any work are subject to being dropped by the instructor.**

GEOLOGY 1314 HISTORICAL GEOLOGY

III. Evaluation

Final grades will be determined based on the following:

Exams (50%) lowest grade may be replaced w/final.

Modules (25%) lowest grade will be dropped

Discussions (25%) lowest grade will be dropped

*Final exam (optional): students who are failing may choose this option. The grade will replace the lowest exam grade, which can be a missed exam

IV. Missed exams- There will be NO make-up exams. Please don't ask!!! Exams are available for several days, make sure and plan accordingly.

V. Required Text-The Changing Earth Special Edition UTEP

Available from: <http://www.cengagebrain.com/micro/1-1080779>

VI. Grading Scale

Above 90 =A 80-89 =B, 70-79 =C, 60-69=D, below 60 =F

VII. Academic dishonesty

Students are encouraged to collaborate on class assignments. You are also strongly encouraged to form study groups and chats and make this class a team effort. However, academic dishonesty (plagiarism, copying, etc) will not be tolerated and will be handled as stated in the UTEP procedures. Remember honesty is the best policy and there is not better work than your own!

VIII. Extra Credit!!!

There are five extra credit projects that are worth 5 pts each towards your lowest EXAM(S) grade. Students may turn in all projects if need be. Refer to calendar for due dates for each one. No late work will be accepted.

1. Write a summary on NOVA/DISCOVERY/NATIONAL GEOGRAPHIC/OTHER television/video special with a geology focus. (2-page, double-spaced). Please include the information given on the topic and your thoughts on it.
2. Students may write a 3-page research paper on a geologic topic of interest. You are free to choose your topic but must first get instructor's approval. Make sure to include a title page, figures or photographs (1 minimum) and references (3 minimum, 2 may be webpages)
3. Students may go to any of the National Parks in the area (or anywhere else) on a personal field trip. Make sure to bring back an entrance ticket (scan) to confirm attendance and a one-page summary. If no ticket is received you may include a picture. Students are usually offered discounts at these places. Some local attractions include: Carlsbad Caverns, Aerial Tramway, Guadalupe National Park, Hueco Tanks, Centennial museum (UTEP), Insights Museum*, Albuquerque Natural History Museum, IMAX theatre*.
4. Pet fossil. Students will collect and identify a fossil collected by them and will write a one-page description of the organism's lifestyle. Please include a picture of your pet fossil. Scenic drive and most rock walls are great places to look for fossils!
5. TBA

GEOL 1314 HISTORICAL GEOLOGY

IX. Disability Statement (American with/Disabilities Act [ADA])

If a student has or suspects she/he has a disability and needs an accommodation, he/she should contact the Disabled Student Services Office (DSSO) at 747-5148 or at <dss@utep.edu> or go to Room 106 Union East Building. The student is responsible for presenting me any DSS accommodation letters and instructions.

X. Military Statement:

If you are a military student with the potential of being called to military service and /or training during the course of the semester, you are encouraged to contact me as soon as possible so that accommodation can be made.

XI. Course communication

If you have any problems or questions please feel free to message me (Bb), drop by (GEOL 317) or text me (915-422-2569).

