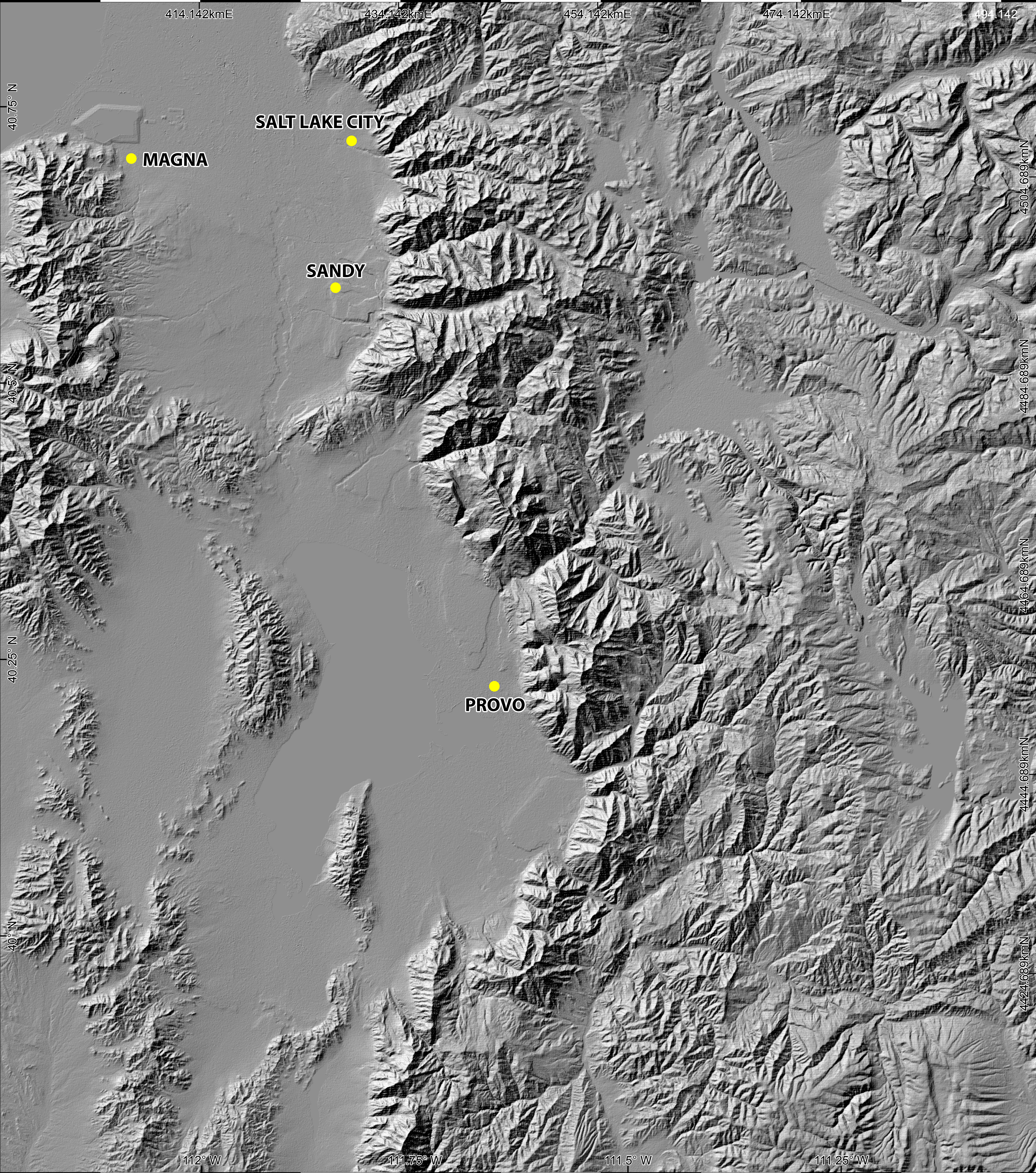


Utah Hillshade



0

12.5

25

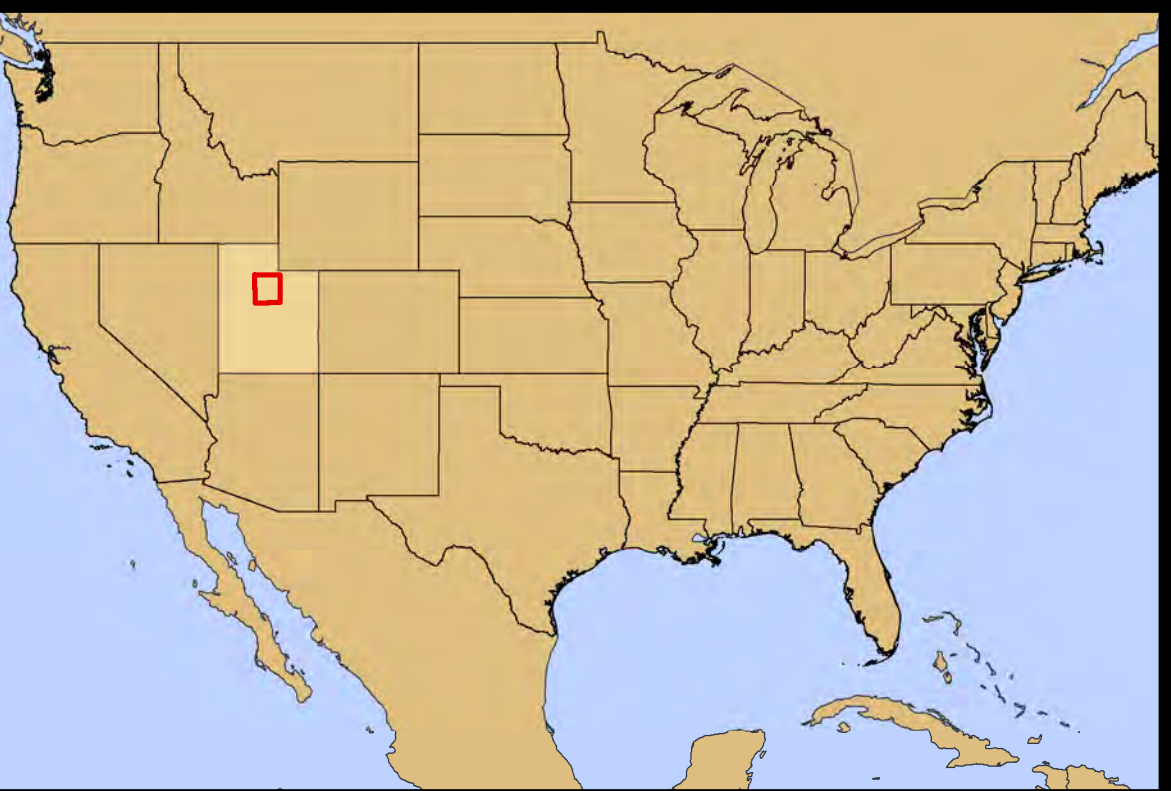
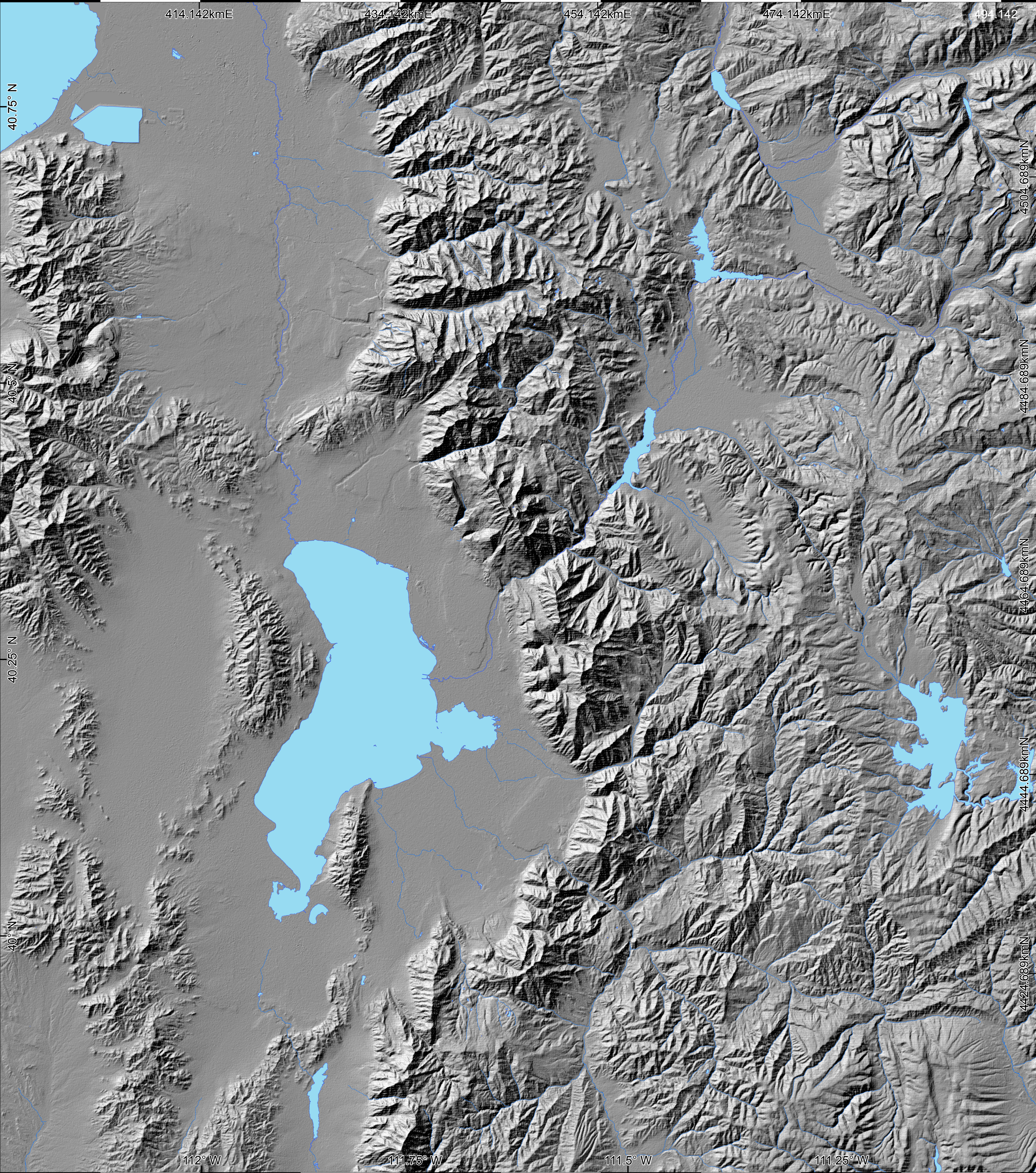
km

Sources:
Country and state boundaries
provided by ESRI.
SRTM DEM data provided by
OpenTopography.

1:190,000

N

Utah Hillshade + Water



0

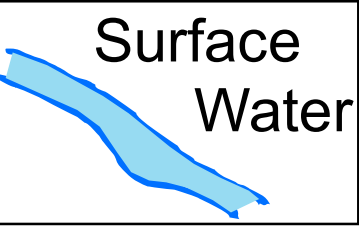
12.5

25

km


Sources:
Country and state boundaries
provided by ESRI.
Hydrologic data provided by
the USGS.
SRTM DEM data provided by
OpenTopography.

Surface
Water

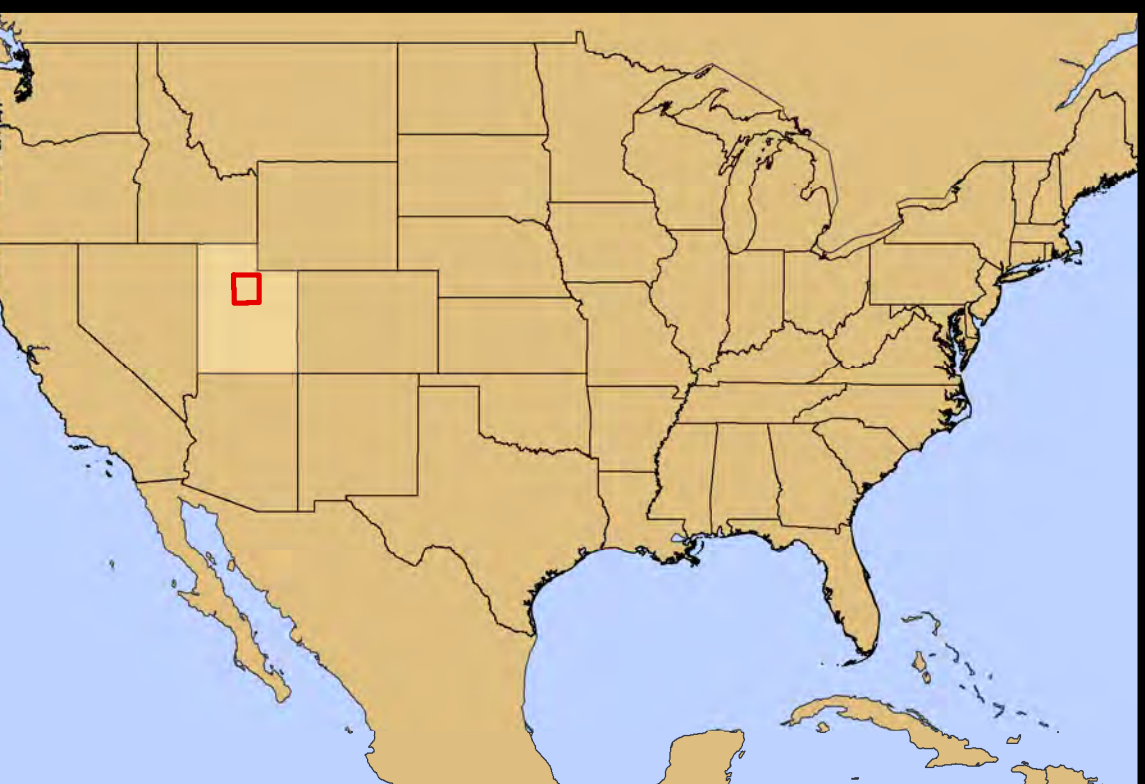
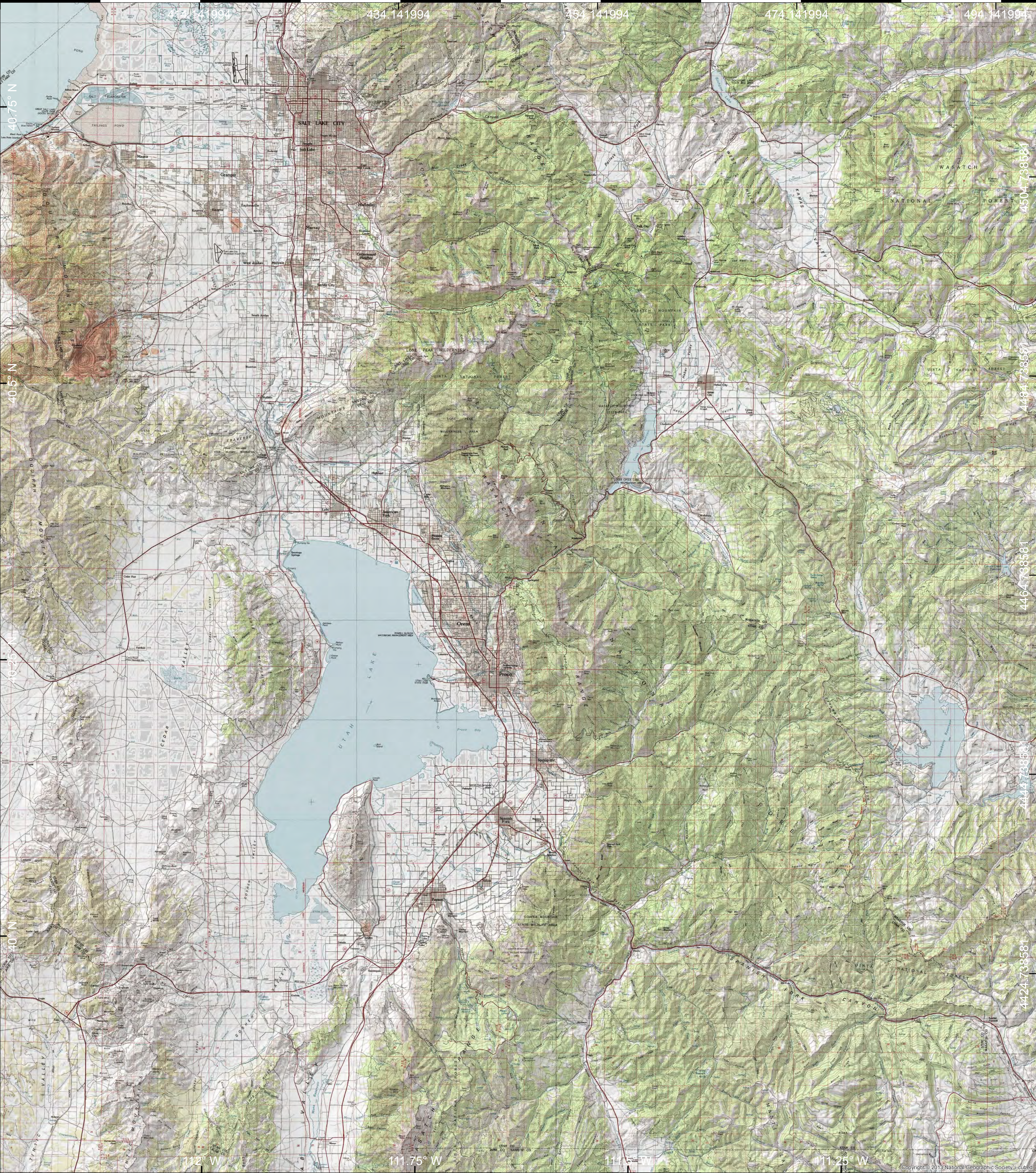


1:190,000

N



Utah Topography



0 12.5 25 km

Sources:
All data provided by ESRI

1:190,000

Contour intervals in meters

Utah Aerial Imagery

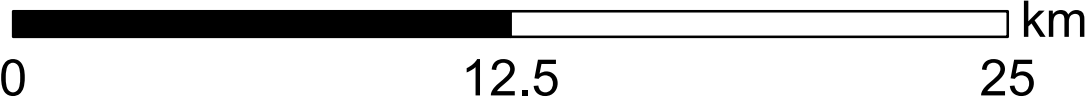


Sources: Esri, DigitalGlobe, GeoEye, Earthstar Geographics, CNES/Airbus DS, USDA, USGS, AeroGRID, IGN, IGP, eotestops, and the GIS User Community

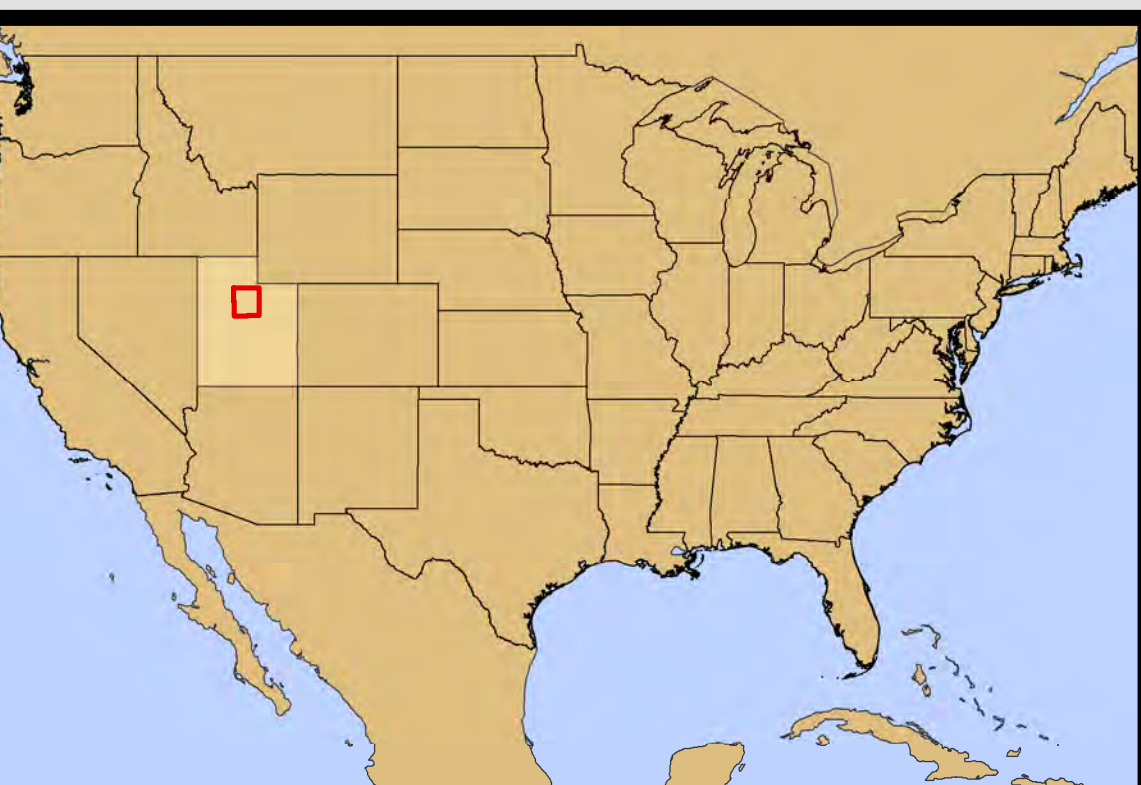
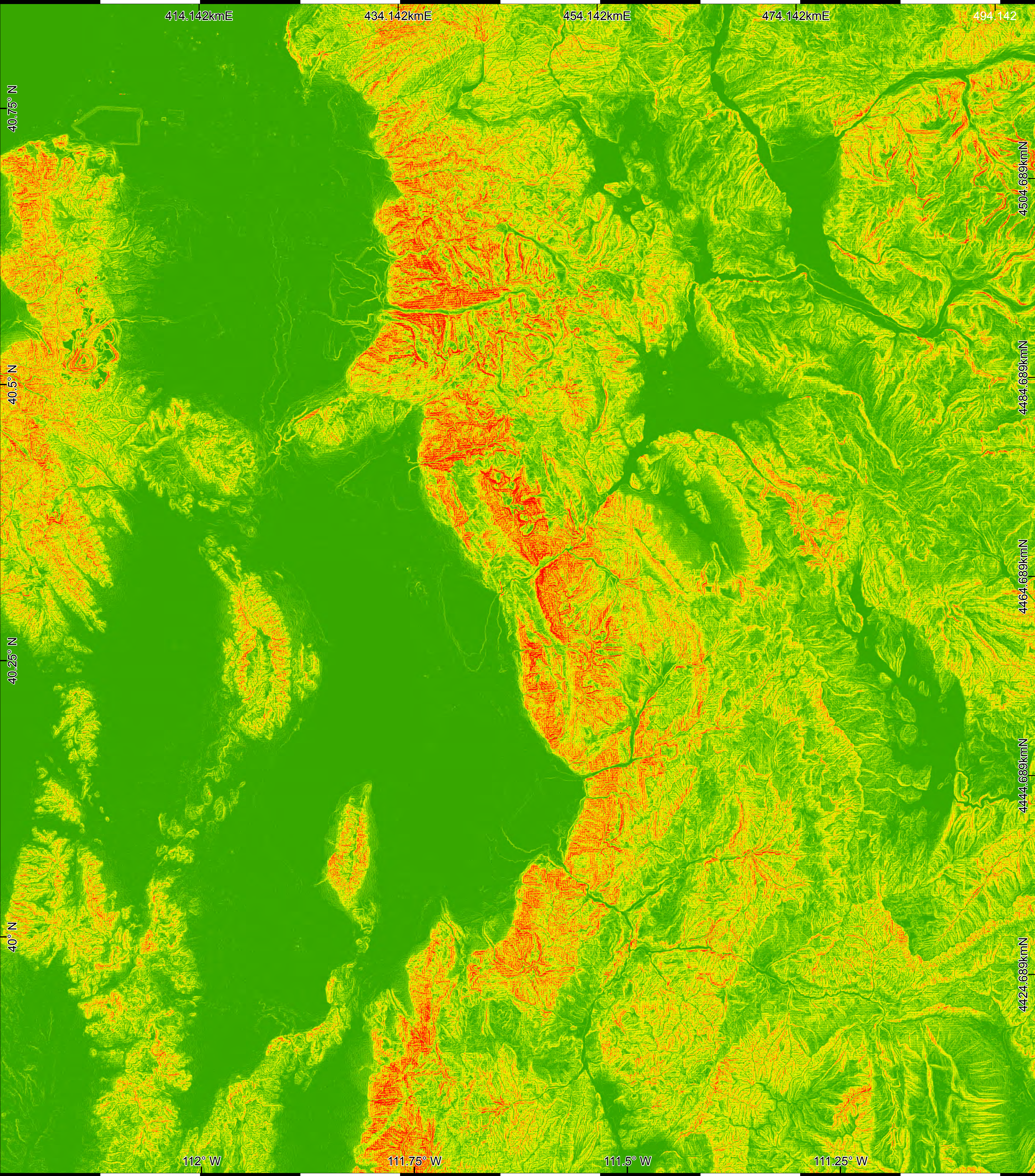


Sources:
All data provided by ESRI
Map made 1/29/16

1:190,000



Utah Slope



0 12.5 25 km

Slope (degrees)

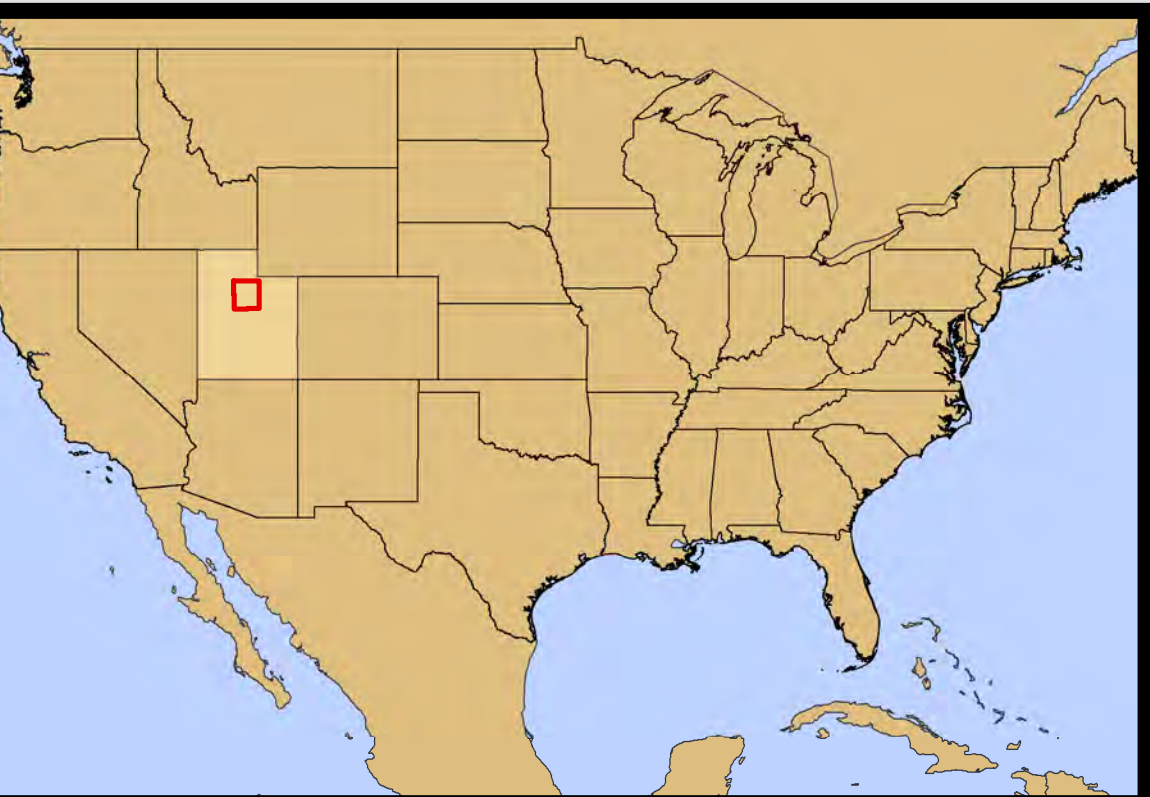
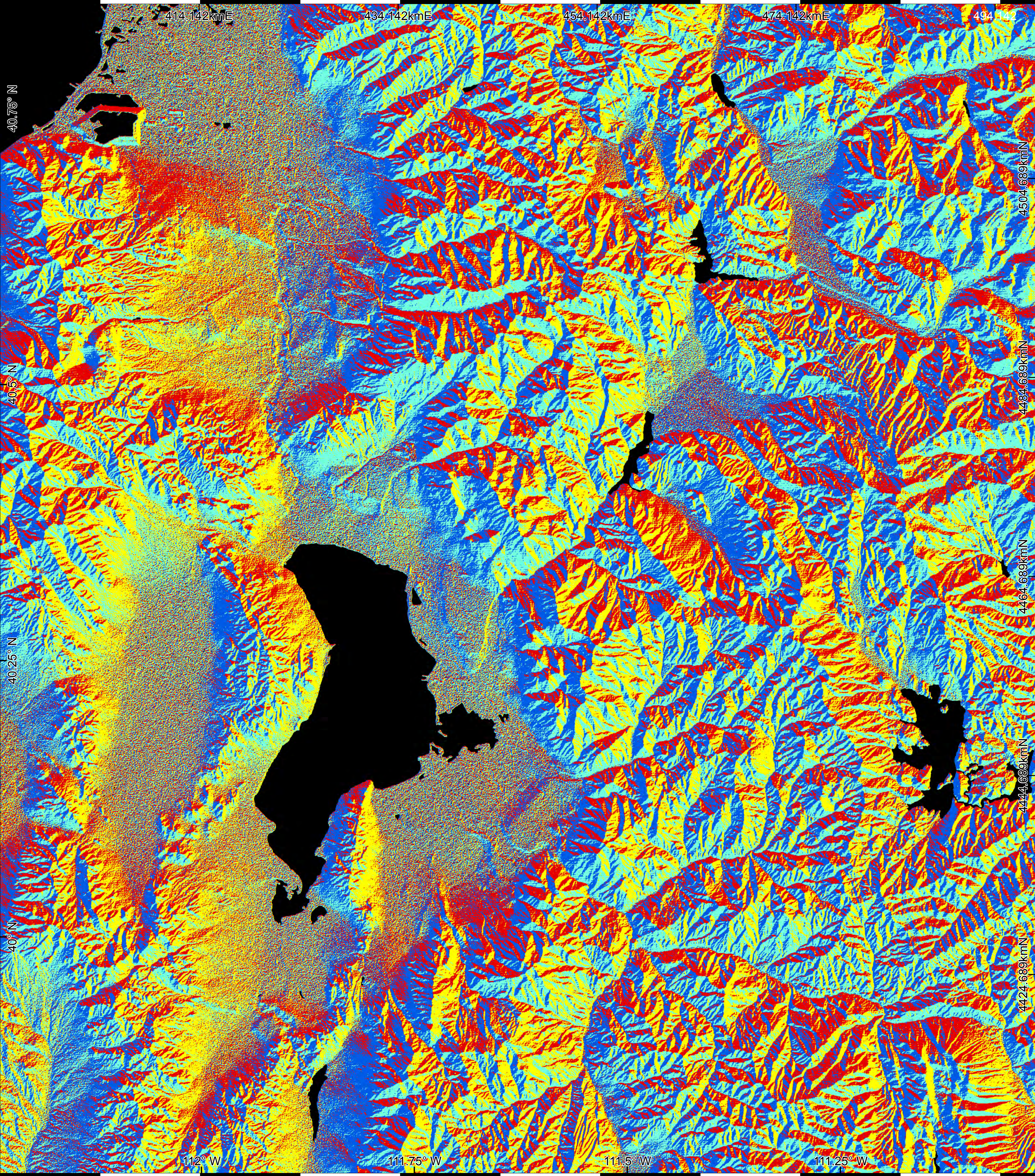
0° - 5°	25° - 30°
5° - 10°	30° - 35°
10° - 15°	35° - 40°
15° - 20°	40° - 45°
20° - 25°	45° - 77.47°

Sources:
Country and state boundaries
provided by ESRI.
SRTM DEM data provided by
OpenTopography.

1:190,000

N

Utah Aspect



0

12.5

25

km

Aspect (degrees)

Flat

315° - 45°

45° - 135°

135° - 225°

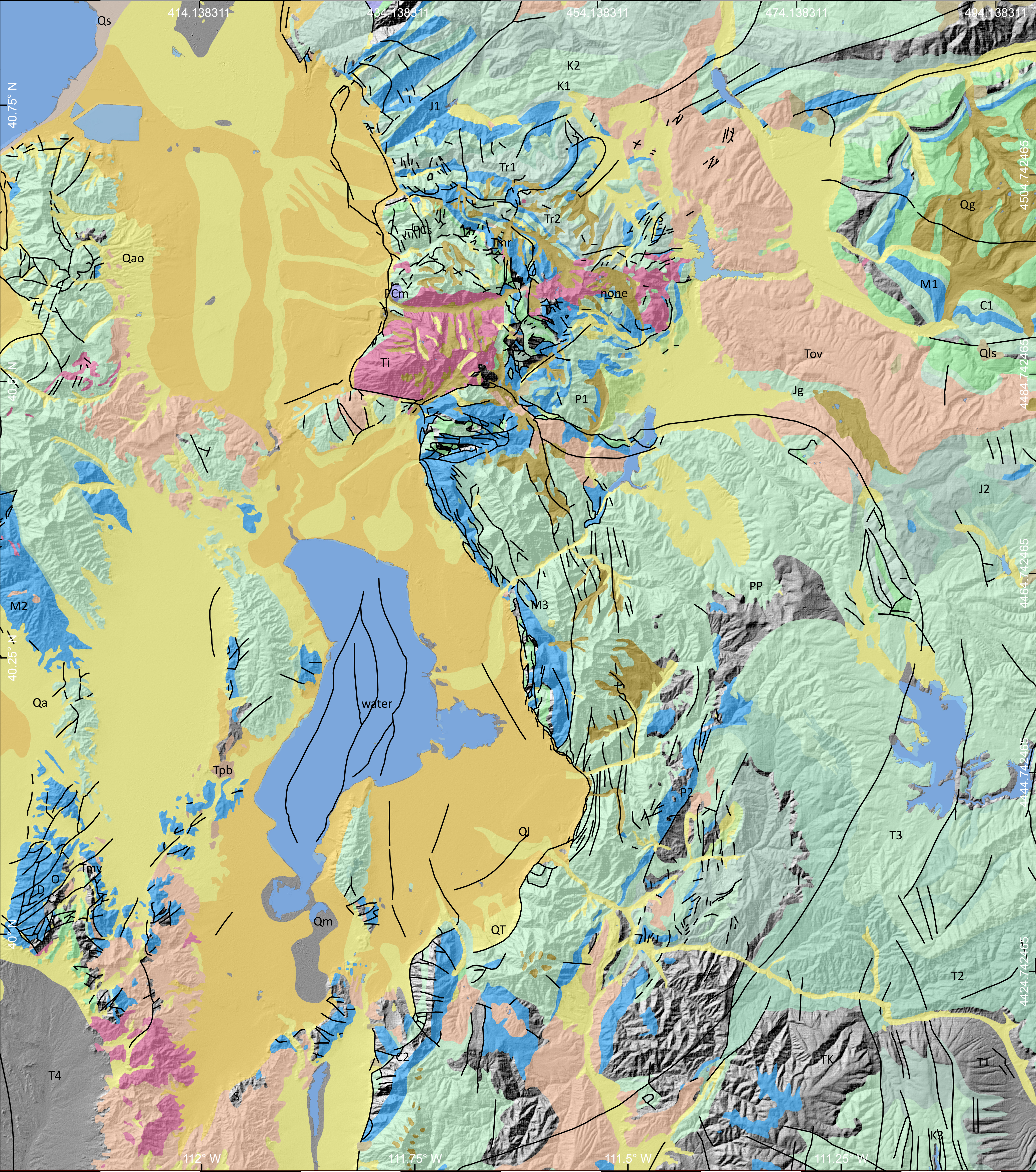
225° - 315°

1:190,000

N

Sources:
Country and state boundaries
provided by ESRI.
SRTM DEM data provided by
OpenTopography.

Utah Geology



Faults

Lakes

alluvium

arenite

ash-flow tuff

basalt

clay or mud

conglomerate

dacite

glacial drift

granodiorite

landslide

limestone

metamorphic rock

mud flat

mudstone

rhyolite

sandstone

shale

siltstone

0

12.5

25

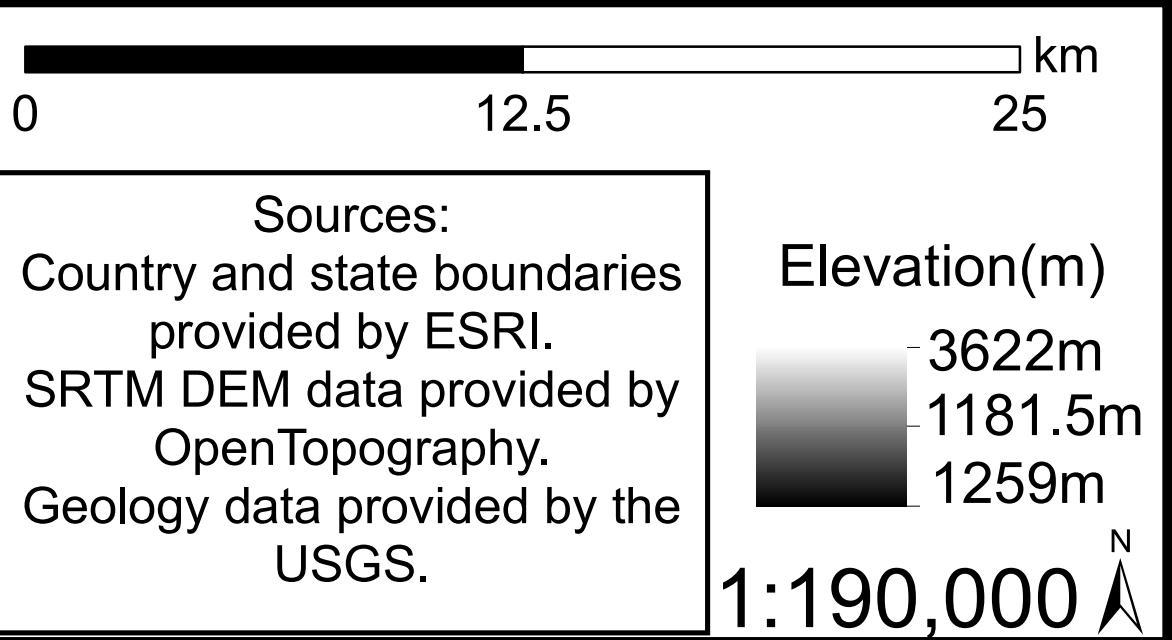
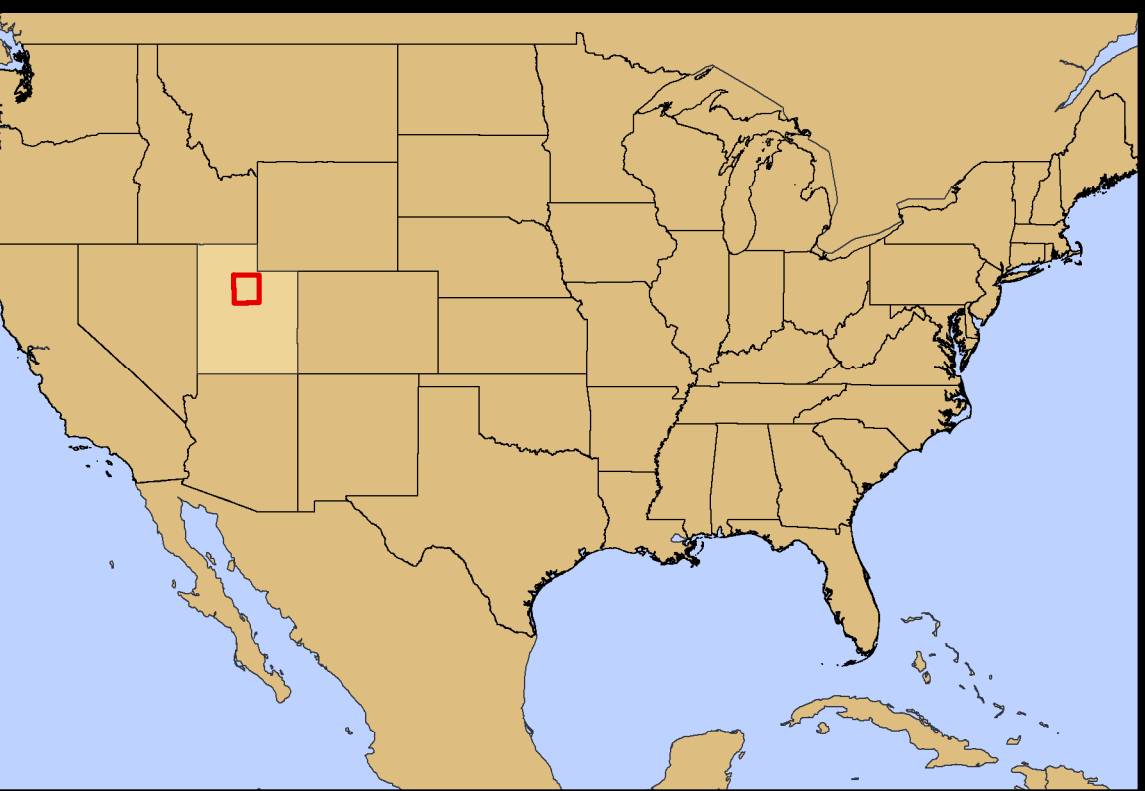
km

Sources:
Country and state boundaries
provided by ESRI.
SRTM DEM data provided by
OpenTopography.
Geology data provided by the
USGS.

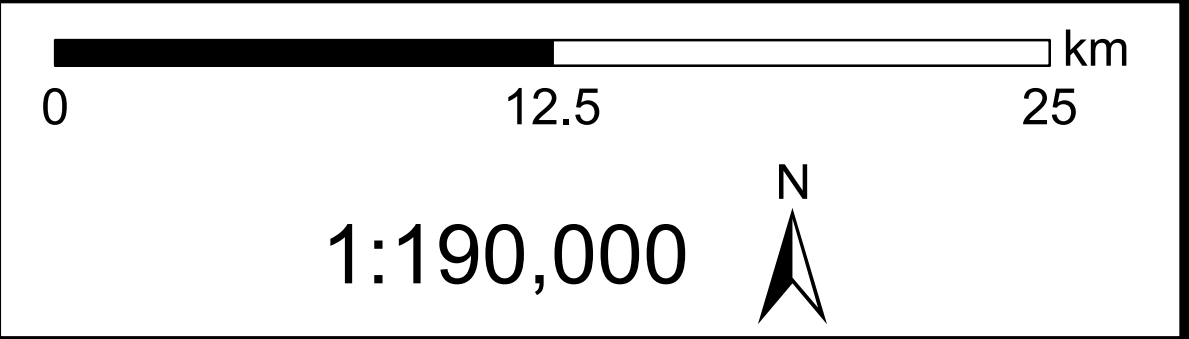
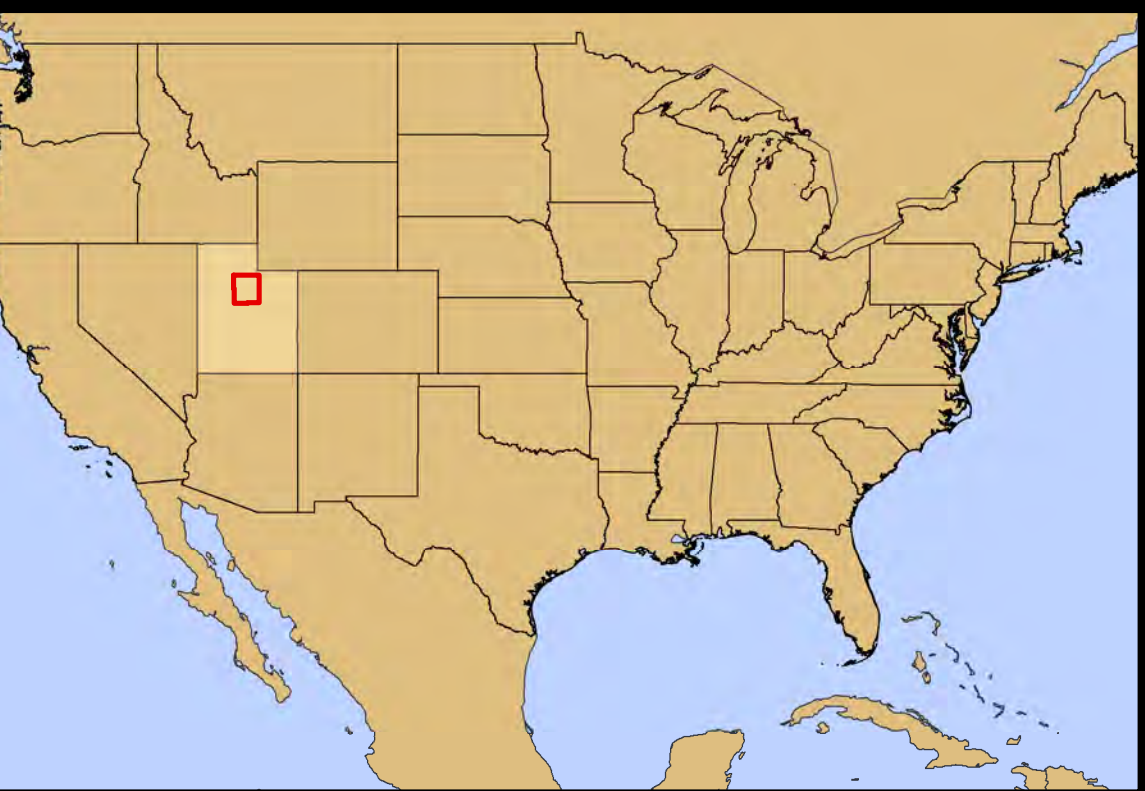
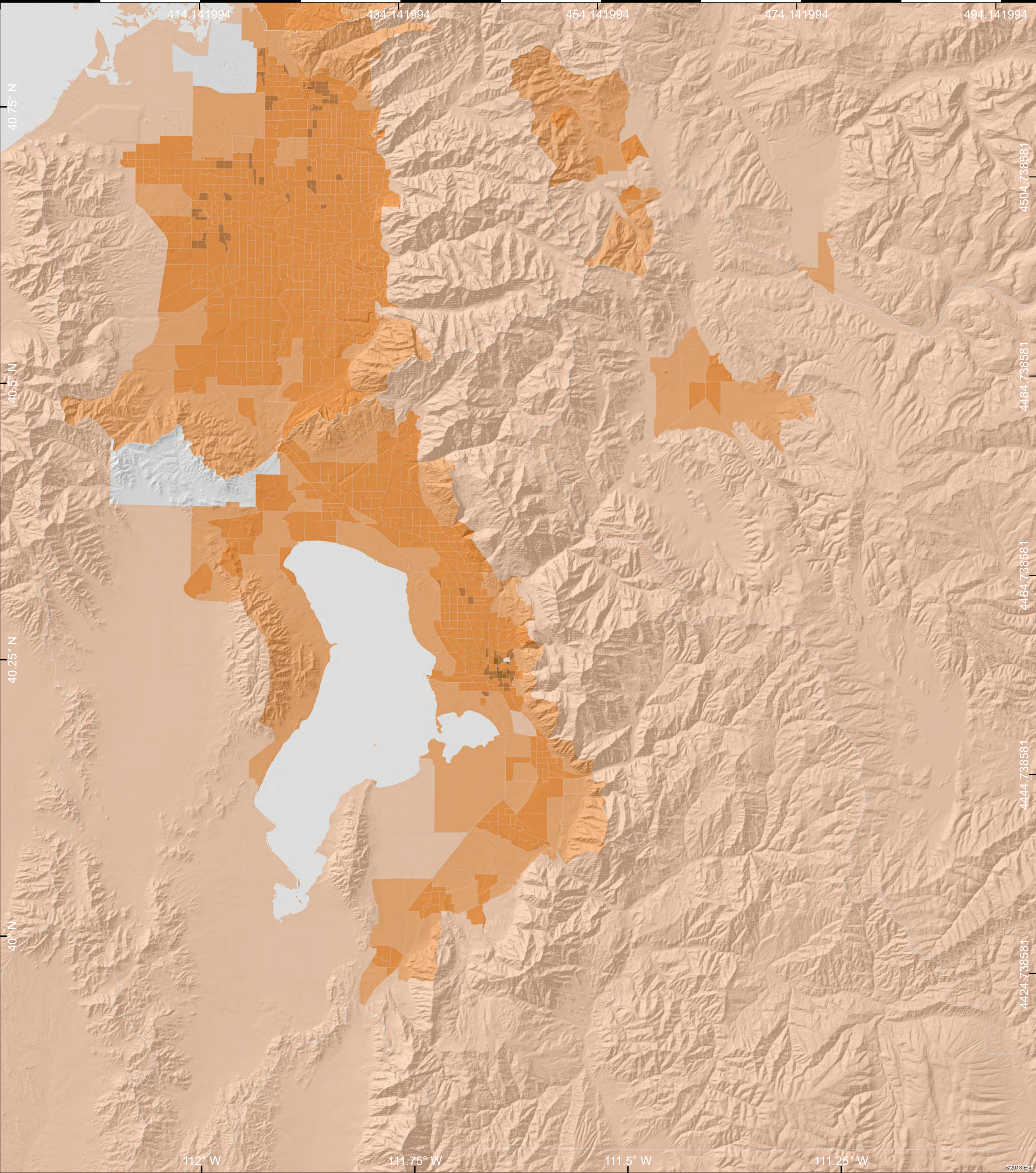
Elevation(m)
-3622m
1181.5m
1259m

1:190,000

Utah Surficial Geology



Utah Population Density (2012)



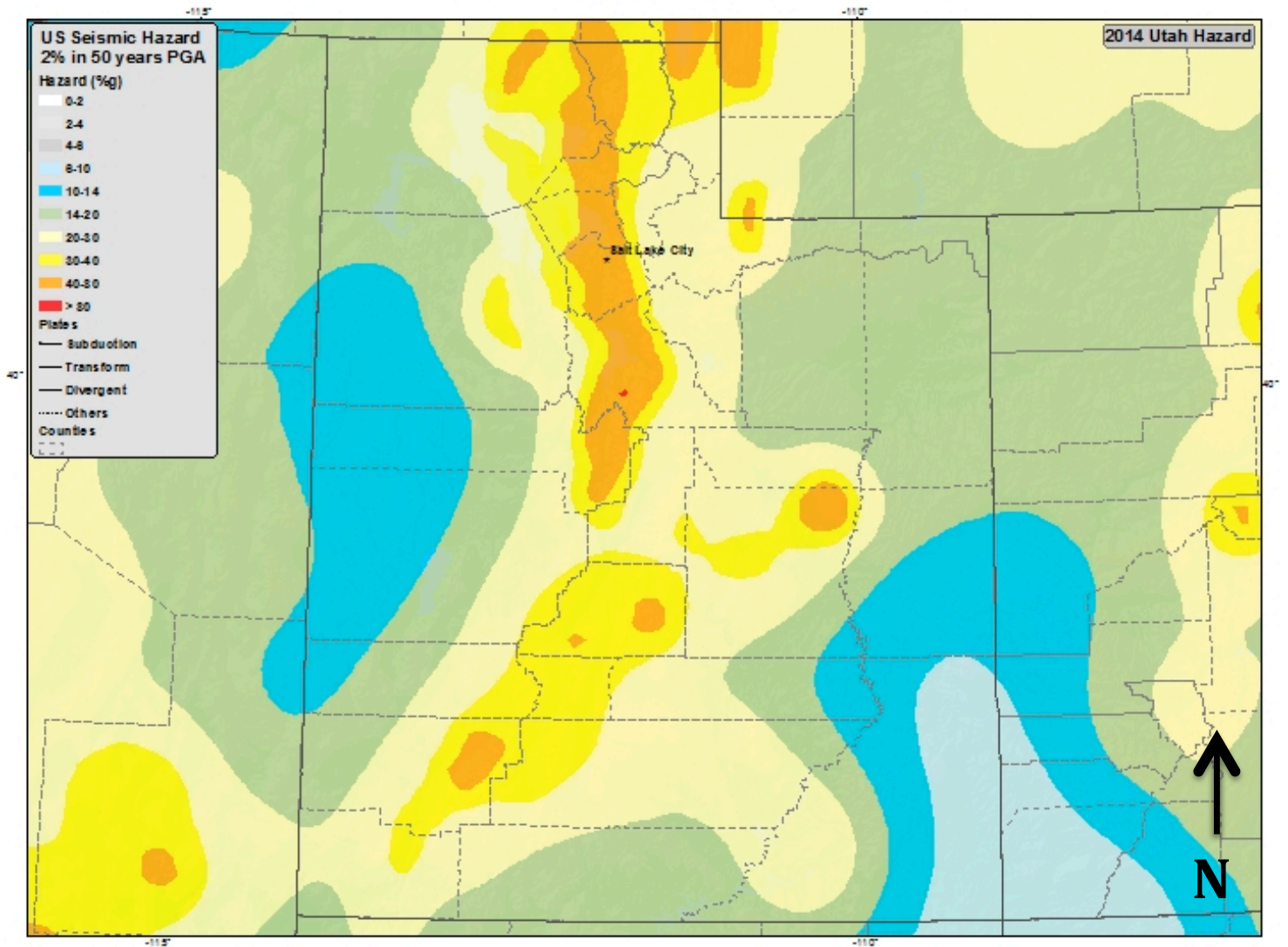
2012 Population Density (Pop per Square Mile) (Esri)

- 100,001 or more people
- 25,001 to 100,000 people
- 10,001 to 25,000 people
- 1,001 to 10,000 people
- 101 to 1,000 people
- 100 or less people
- No population

Sources:
Country and state boundaries
provided by ESRI.
SRTM DEM data provided by
OpenTopography.
Population Density data
provided by ESRI.

Utah

2014 Seismic Hazard Map



Seismic Hazards Map of UT state from the USGS Earthquake Hazards Program website: <http://earthquake.usgs.gov/earthquakes/states/utah/hazards.php>