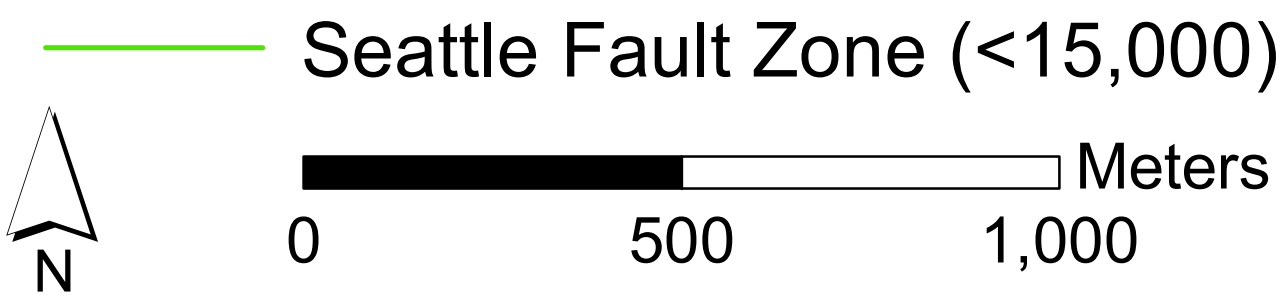
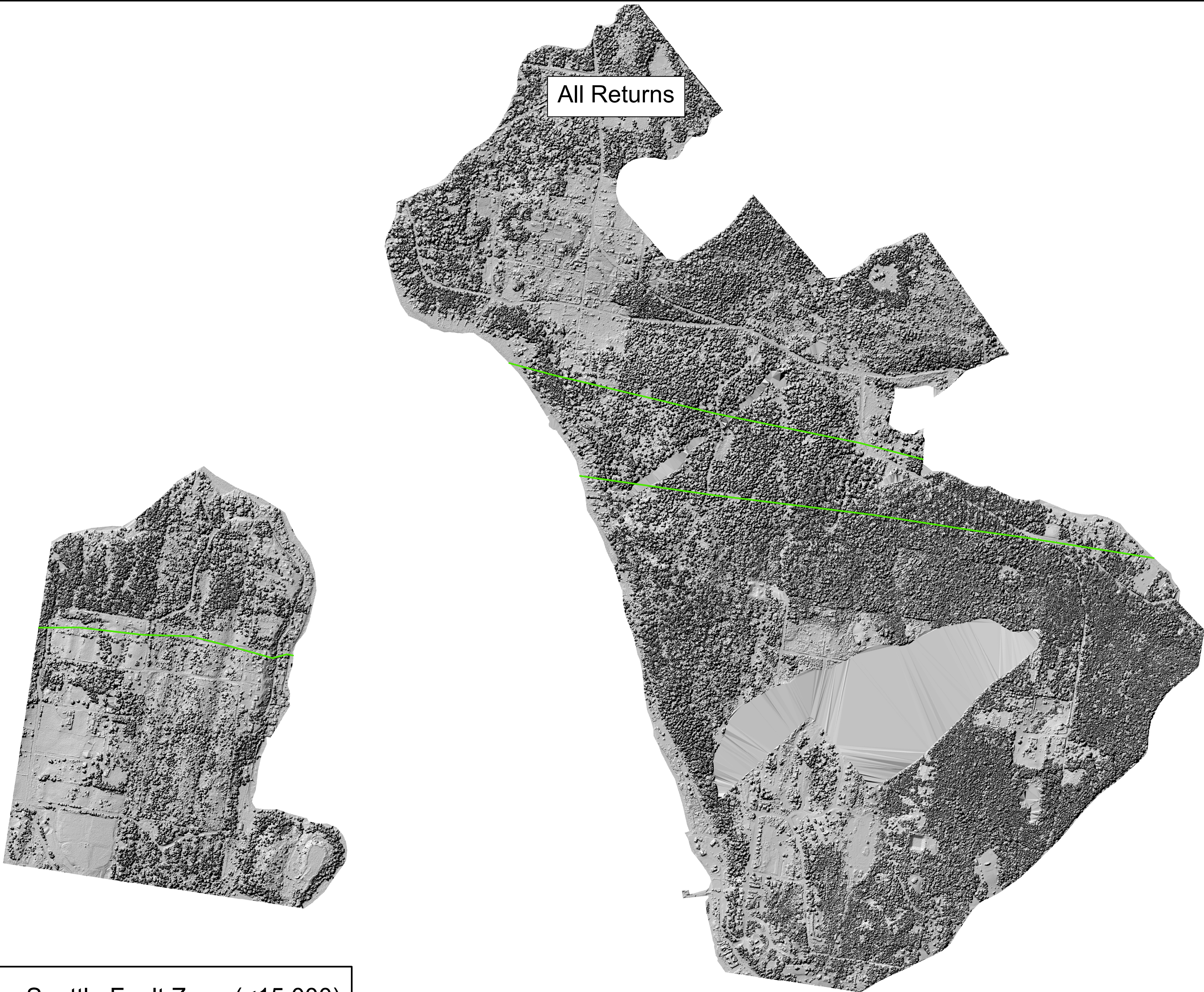


Seattle Fault Zone



LIDAR Bare Earth DEM and LIDAR All Returns ASCII Points [computer files]. (2000). The woodlands, TX: Terrapoint. Available: Puget Sound LIDAR Consortium, Seattle, WA
<http://pugetsoundlidar.ess.washington.edu/index.htm> [July 10th, 2014].

Fault data provided by:
U.S. Geological Survey, 2006, Quaternary fault and fold database for the United States, accessed July 10, 2014, from USGS web site:<http://earthquake.usgs.gov/hazards/qfaults/>

