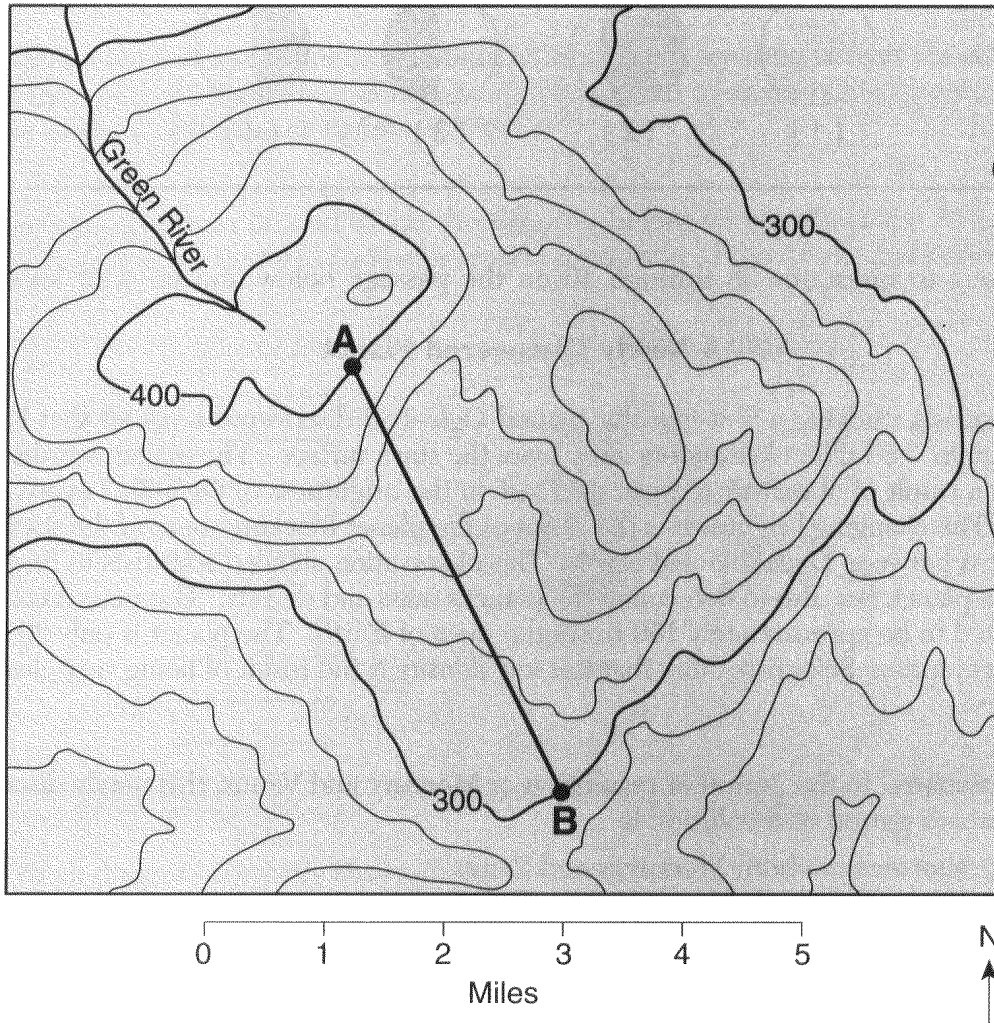


- 4) Base your answer to the following question on the topographic map below. Elevations are in feet. Point A and B are locations on the map.



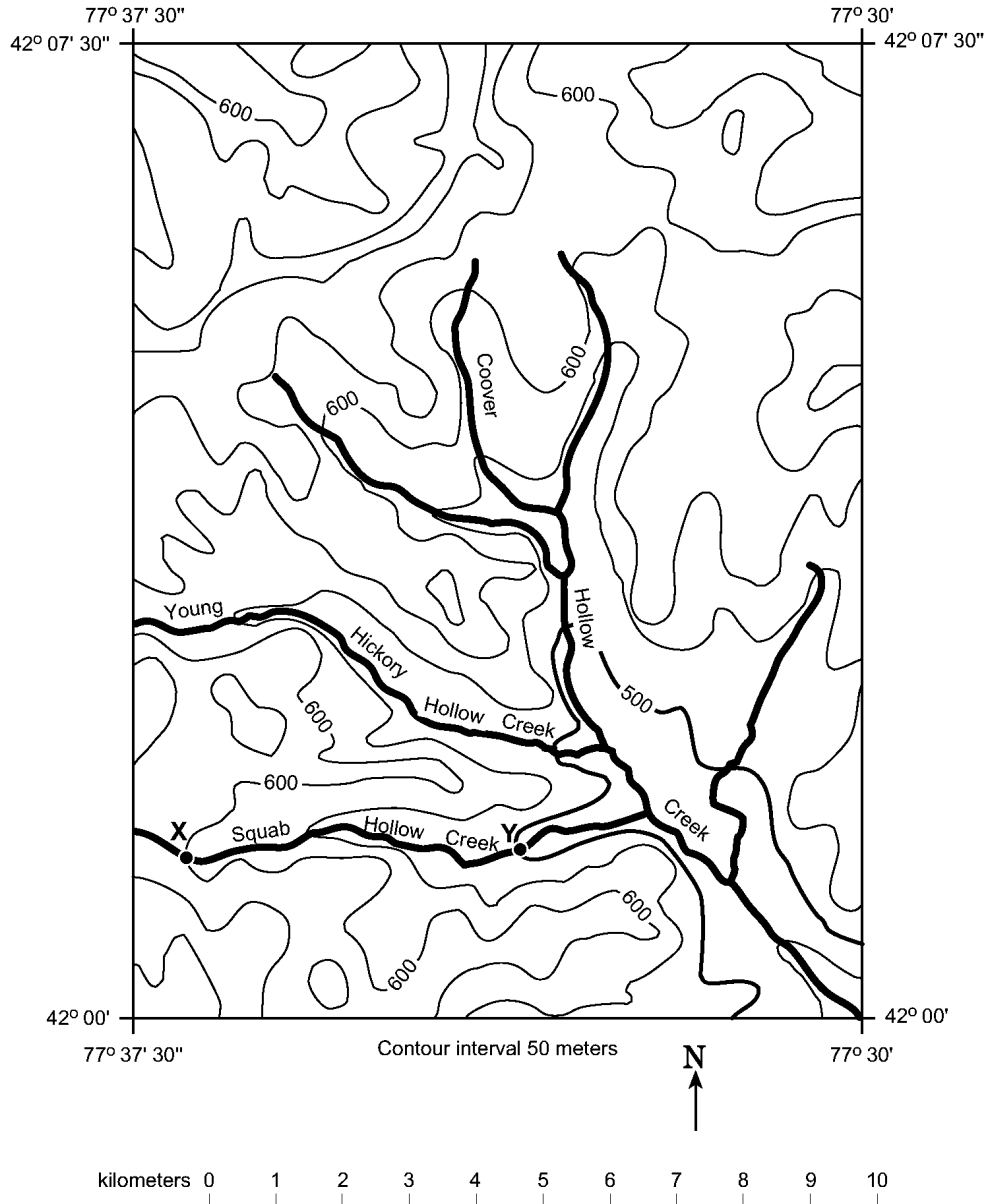
What is the gradient along the straight line between points A and B?

- A) 10 ft/mi B) 20 ft/mi C) 25 ft/mi D) 35 ft/mi

- 5) A stream has a source at an elevation of 1,000. meters. It ends in a lake that has an elevation of 300. meters. If the lake is 200. kilometers away from the source, what is the average gradient of the stream?

- A) 1.5 m/km C) 10. m/km
B) 3.5 m/km D) 15 m/km

6) Base your answer to the following question on the topographic map below. Points X and Y are locations on Squab Hollow Creek.



Determine the gradient of Squab Hollow Creek between point X and point Y by following the directions below.

- a Write the equation used to determine the gradient.
- b Substitute values into the equation.
- c Solve the equation and label the answer with the correct units.