

## EarthScope is coming to the Northern Rockies!

September 16 – 18, 2005

Montana State University - Bozeman, MT

### First call for applications



Geodetic instruments from the PBO component of EarthScope are currently being deployed in the northern Rocky Mountains and the USARRAY transportable seismic network will arrive in 2007. Now is the time for all geoscientists working in this region to start making plans to fully utilize the wide range of observing capabilities EarthScope will bring to bear on the northern Rocky Mountains.

The goals of this workshop are to familiarize earth scientists with interests in Rocky Mountain geology with the capabilities of the Earth Scope experiments and to identify the "big" scientific questions that can be addressed most effectively through EarthScope activities.

The workshop results will be compiled in the form of a "white paper" that will outline an integrated research agenda for the use of the EarthScope facilities and identify ways to engage the public, students, and other geoscientists through a variety of education and outreach activities.

### Workshop activities

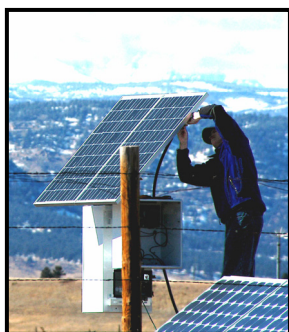
On-campus workshop: September 16 (evening only), 17 and 18

Pre-workshop field trip: Fri. September 16 - A taste of Archean and Proterozoic geology

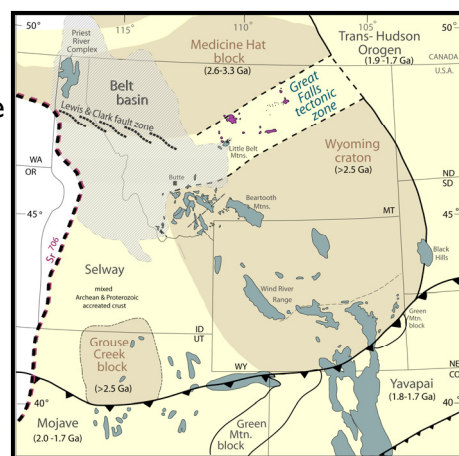
Post-workshop field trip: Mon. September 18 - Visit to a local hot spot (Yellowstone)

Both field trips are optional, and there is separate registration for each.

### The scientific targets for EarthScope include:



- Continental structure and evolution
- Fluids and magmas in the crust and upper mantle
- Convergent margin processes
- Large-scale continental deformation
- Fault properties and earthquake processes
- Deep-Earth structure
- Crust-mantle interactions
- Seismicity, active tectonics, and geohazards
- Evolution of landscapes
- Magmatism and mineralization



### How to apply

Applications for travel stipends are due by June 1, 2005.

General registration will take place after June 1, 2005.

To apply, or for more information, visit <http://serc.carleton.edu/earthscoperockies>