

Leveraging Local Connections to Provide Combined Research and Professional Development Opportunities for Undergraduates

Katie Farnsworth, Holly Travis and Matt Genchur

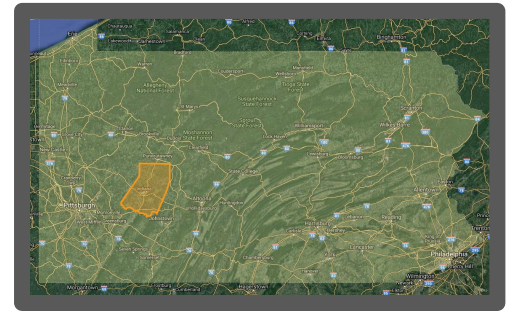




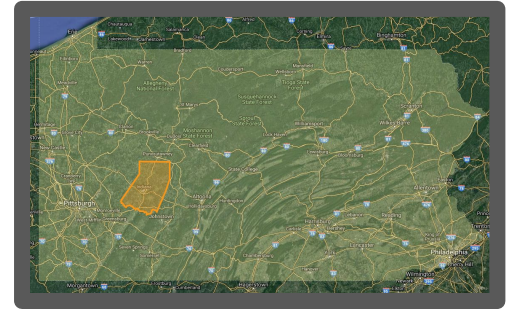
IUP is part of the
Pennsylvania State System
of Higher Education
(PASSHE).



Indiana Pennsylvania is located in a rural county in Western PA.

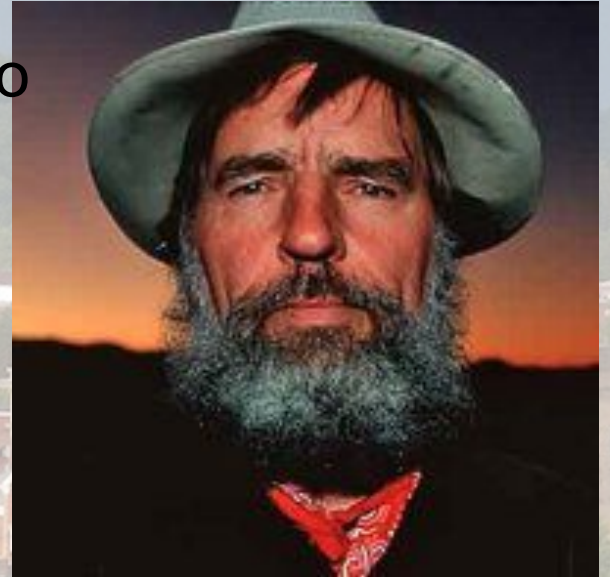


Indiana, Pennsylvania is located in a rural county in Western PA.



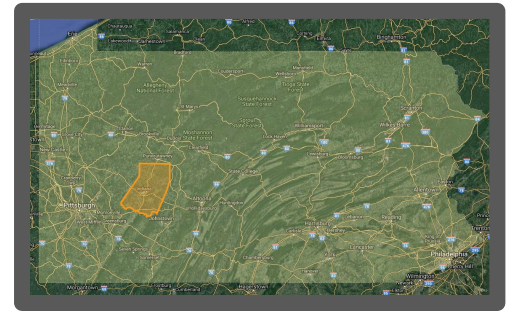
Jimmy Stewart

It is the hometown to these two men.

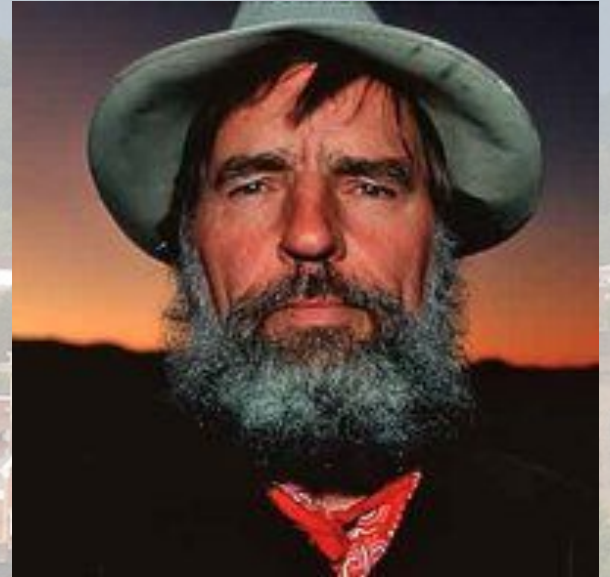


Edward Abbey

Indiana, Pennsylvania is located in a rural county in Western PA.



Can you guess which one has a museum dedicated to him on our main street?



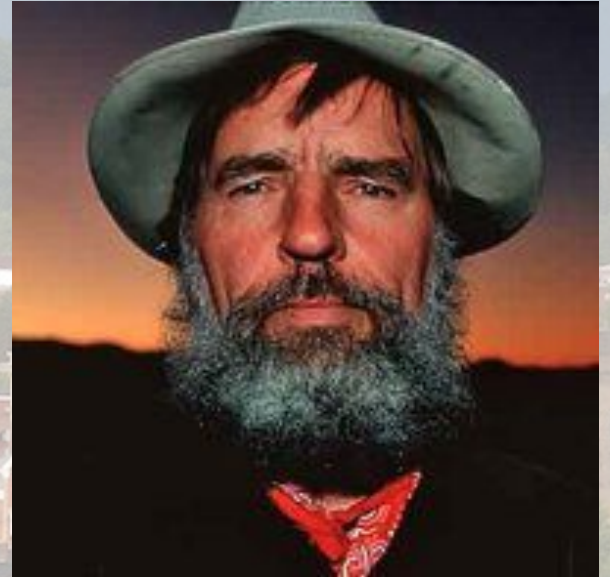
Coal mining used to be the dominant industry, and is still an important part of the economy and culture.



Have you figured it out yet?



Can you guess
which one has a
museum dedicated
to him on our main
street?



The region has a significant amount of legacy contamination from industry and mining.



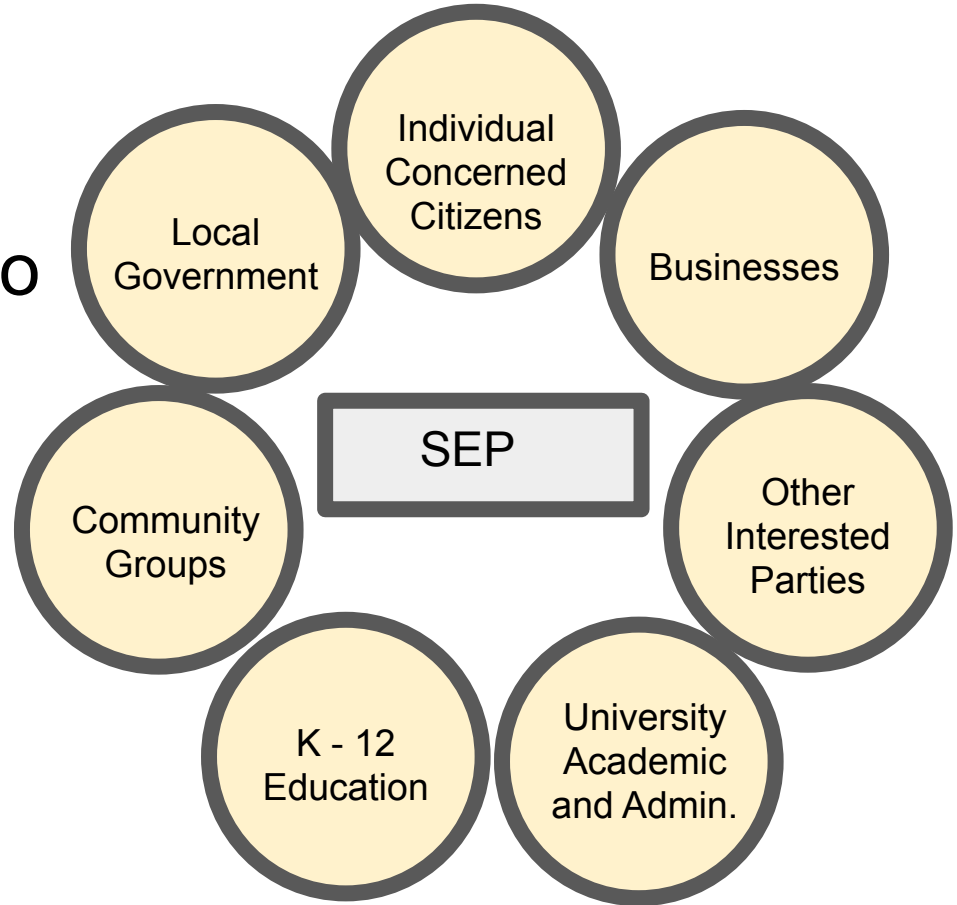
Environmental impacts from natural resource extraction continues today.



In 2010 I was asked to provide input to a local environmental group on water quality monitoring and data management.

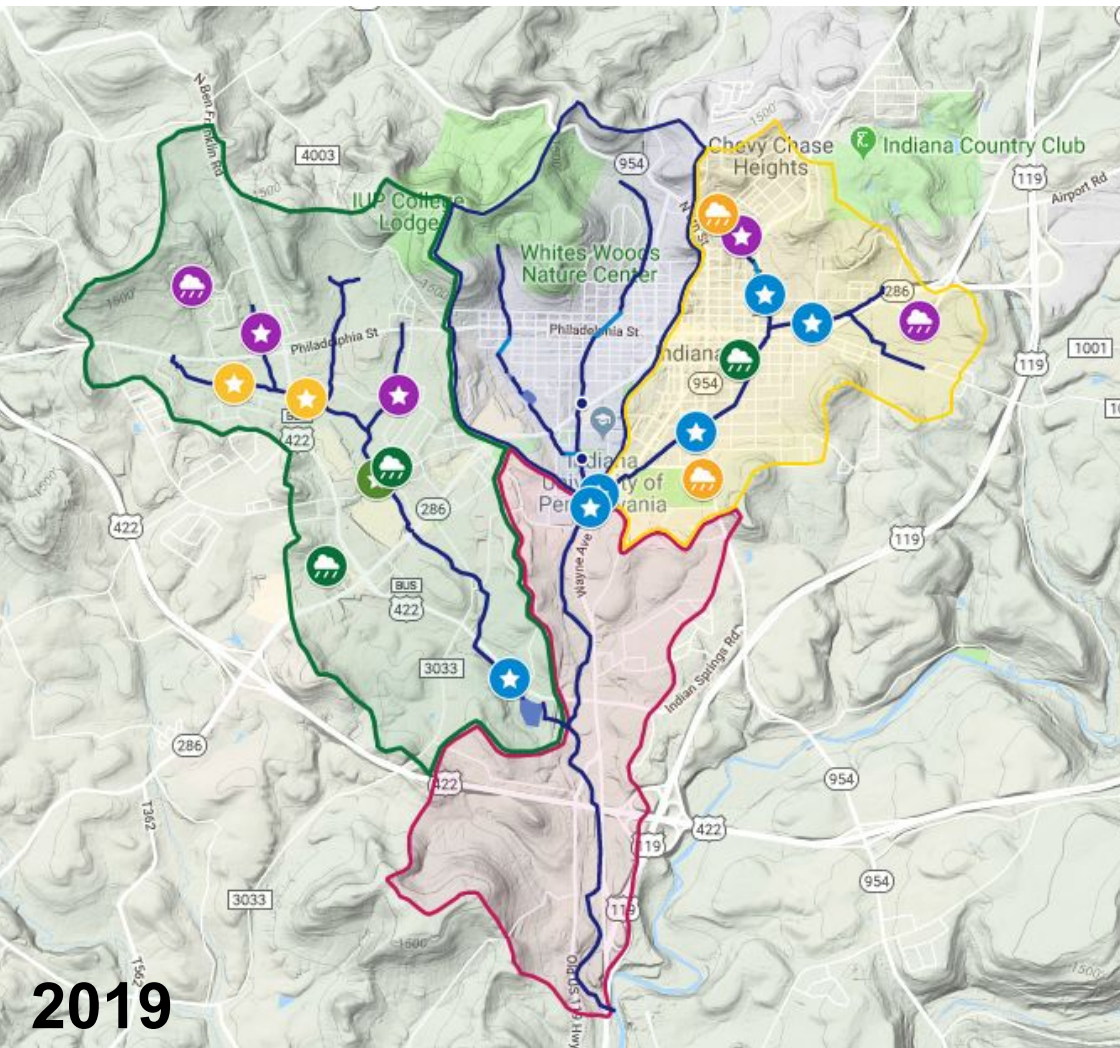


In 2015 the League of Women Voters held a summit on stormwater issues, this has grown into a partnership focused on stormwater.



It has been a great benefit for our community, but also for our students.

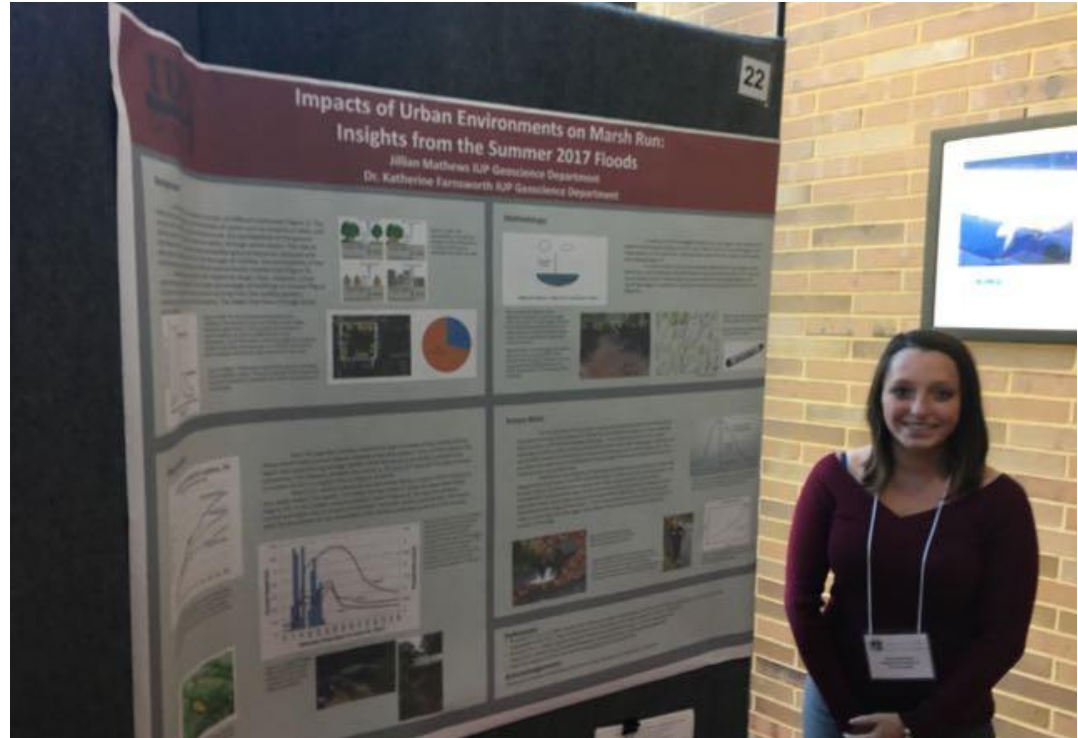




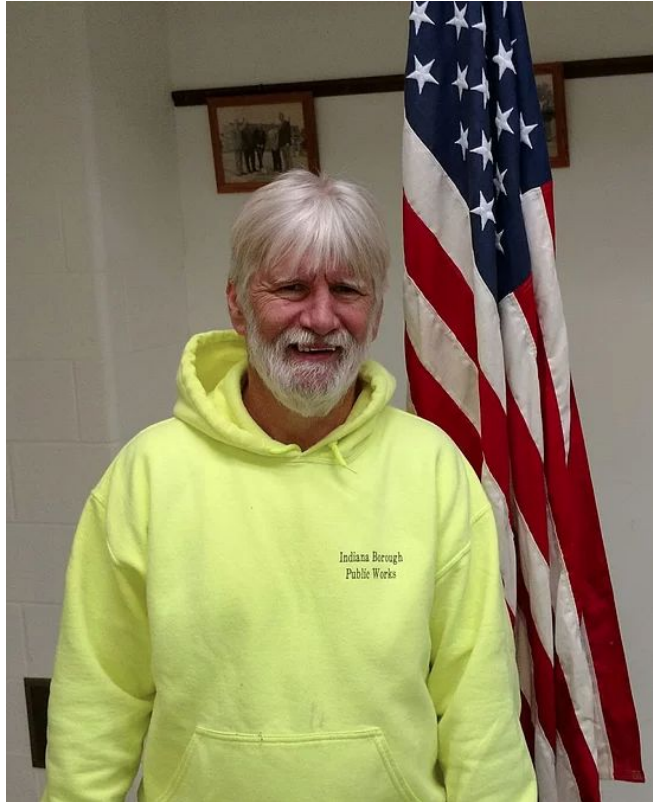
We have instrumented many parts of the streams

Over the past 3 years, 12 undergraduate research projects have focused on these streams.

It has been a great benefit for our community, but opened up more opportunities for our students than I expected..



Students have had the opportunity to interact with all levels of local government.



They have worked on outreach in many forms to many different audiences.



The Stormwater Education Partnership comes with a built in mentoring network for my students and has provided benefits I never expected.

- Career Opportunities (local and not)
- Letters of Recommendation
- Mini-grants
- Internships
- Free Housing (!)
- A sense of community
- fishing partners

Three years in and we still have a good turnout for our monthly meetings, the partners must still see value.

