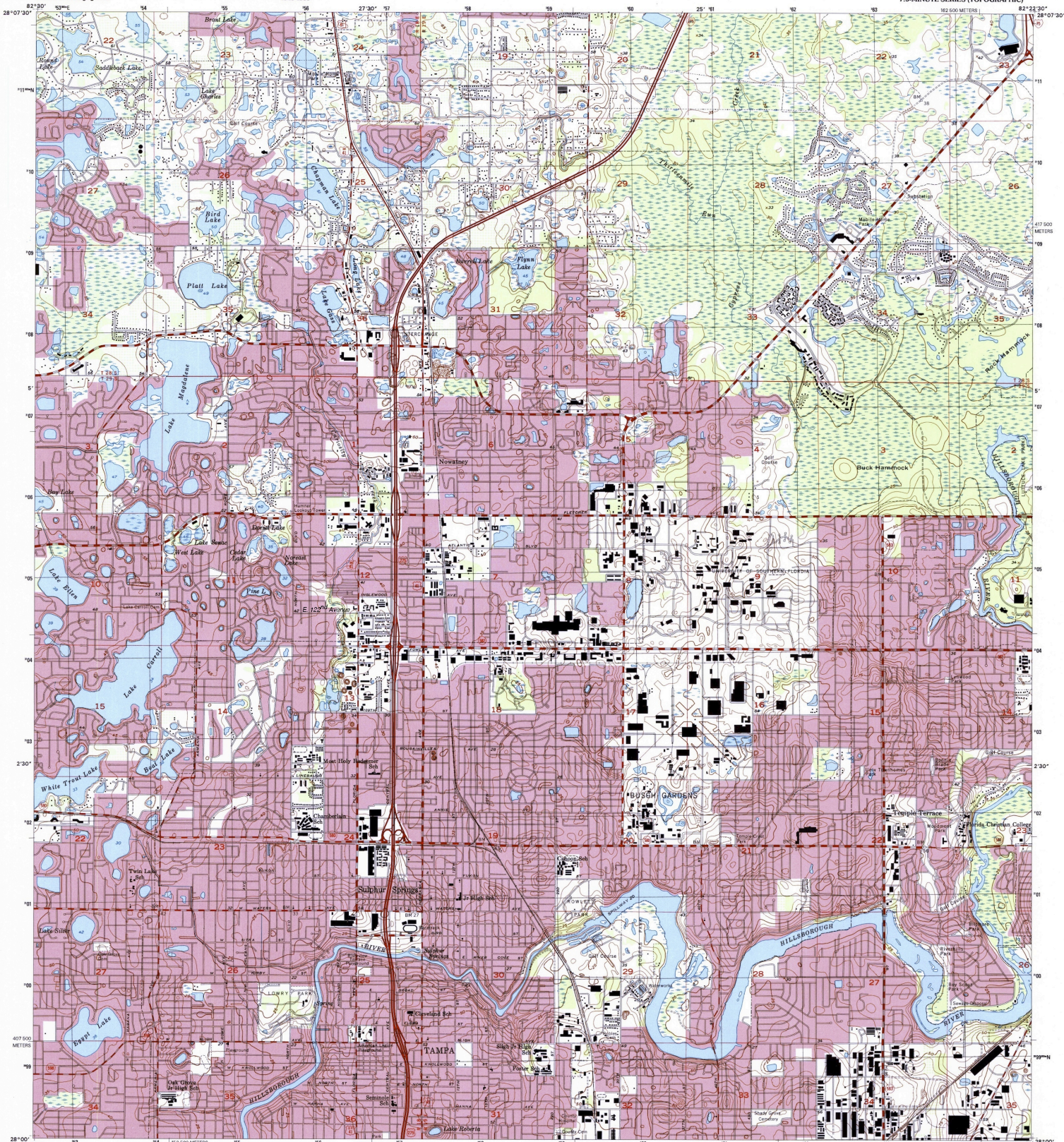




U.S. DEPARTMENT OF THE INTERIOR  
U.S. GEOLOGICAL SURVEY



SULPHUR SPRINGS QUADRANGLE  
FLORIDA-HILLSBOROUGH CO.  
7.5-MINUTE SERIES (TOPOGRAPHIC)



Produced by the United States Geological Survey  
Topography compiled 1956. Planimetry derived from imagery  
taken 1995 and other sources. Public Land Survey System and  
survey control current as of 1996.  
North American Datum of 1983 (NAD 83). Projection and  
1:50,000 meter grid. Universal Transverse Mercator (zone 17)  
2,500-meter ticks. Florida Coordinate System of 1983 (west zone)  
North American Datum of 1983 (NAD 83) is shown by dashed  
center ticks. The values of the ticks between NAD 83 and  
NAD 27 for 7.5-minute intersections are obtainable from  
National Geospatial Survey NADCON software.  
There may be private inholdings within the boundaries of the  
National or State reservations shown on this map.  
Landmark buildings verified 1996.

UTM GRID AND 1996 MAGNETIC NORTH  
DECLINATION AT CENTER OF SHEET

SCALE 1:24,000  
CONTOUR INTERVAL 5 FEET  
NATIONAL GEODETIC VERTICAL DATUM OF 1929  
TO CONVERT FROM FEET TO METERS, MULTIPLY BY 0.3048



ROAD CLASSIFICATION  
Primary highway  
Secondary highway  
Light-duty road, hard or  
improved surface  
Unimproved road  
Interstate Route  
U.S. Route  
State Route

1	2	3	4	5	6	7	8	9	10
1	2	3	4	5	6	7	8	9	10

SULPHUR SPRINGS, FL  
1995

NDA 6540 610-SERIES 1947

FOR SALE BY U.S. GEOLOGICAL SURVEY, P.O. BOX 55286, DENVER, COLORADO 80225  
A FOLDER DESCRIBING TOPOGRAPHIC MAPS AND SYMBOLS IS AVAILABLE ON REQUEST

