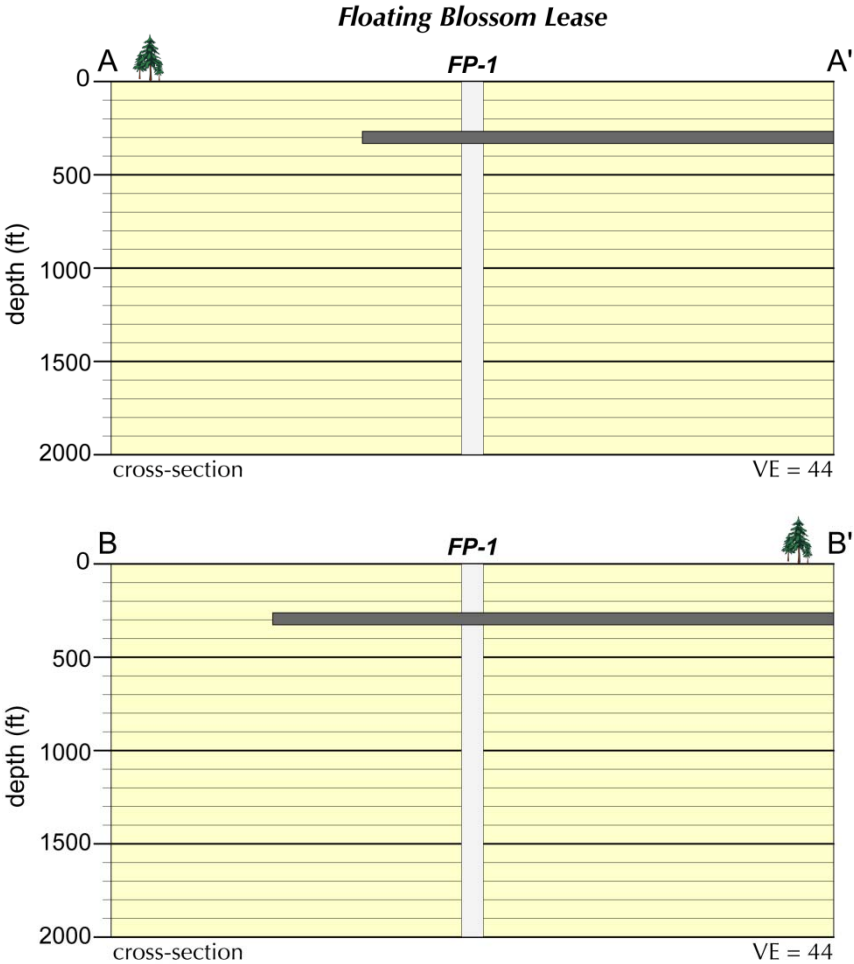
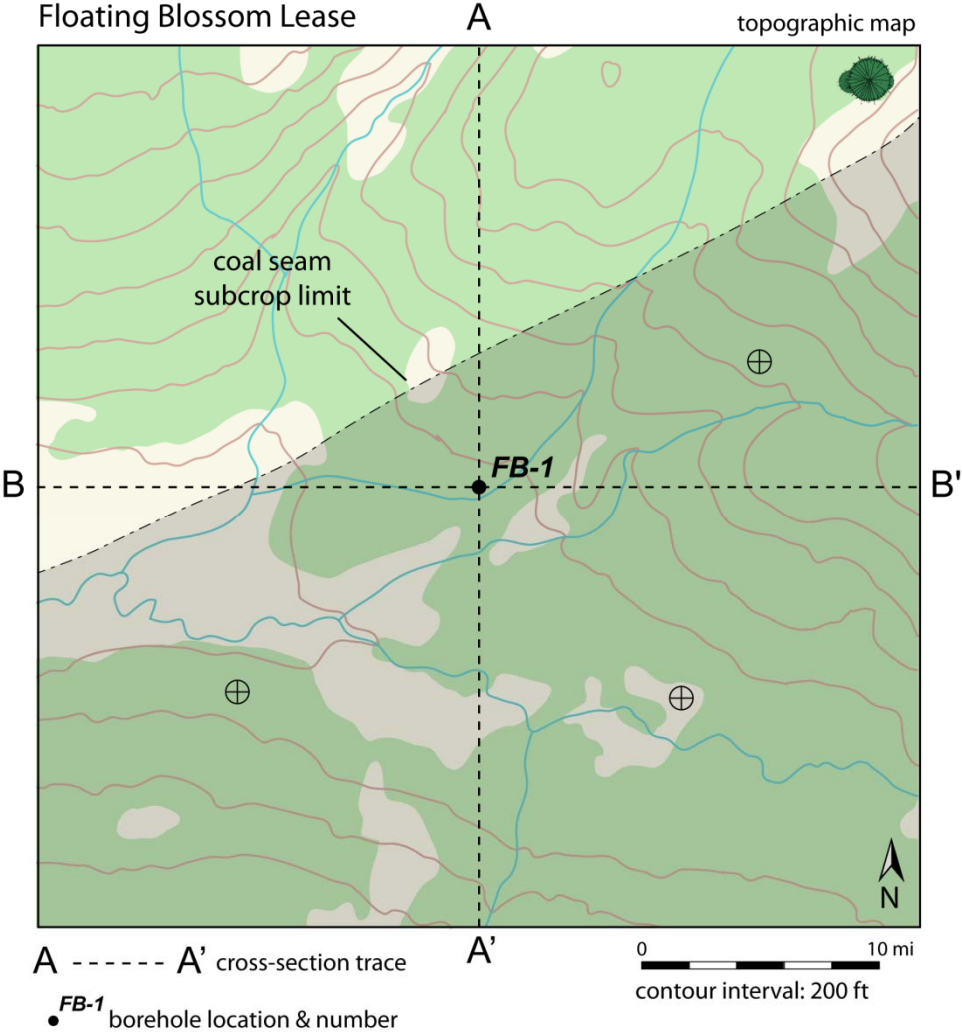


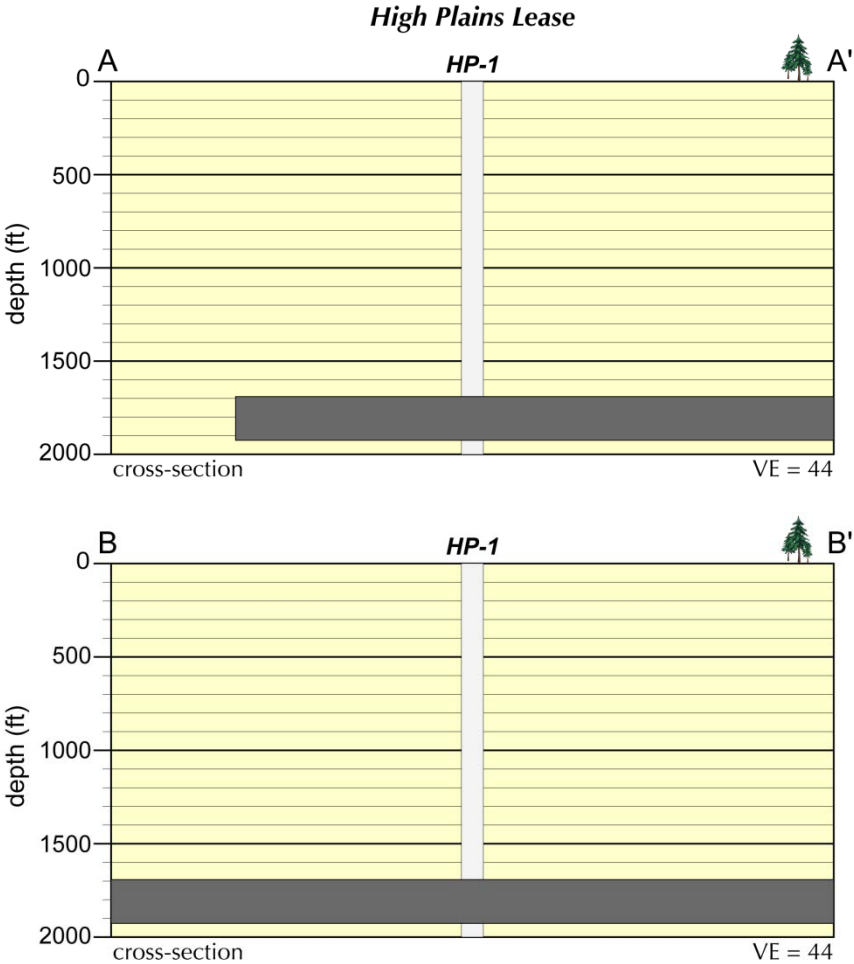
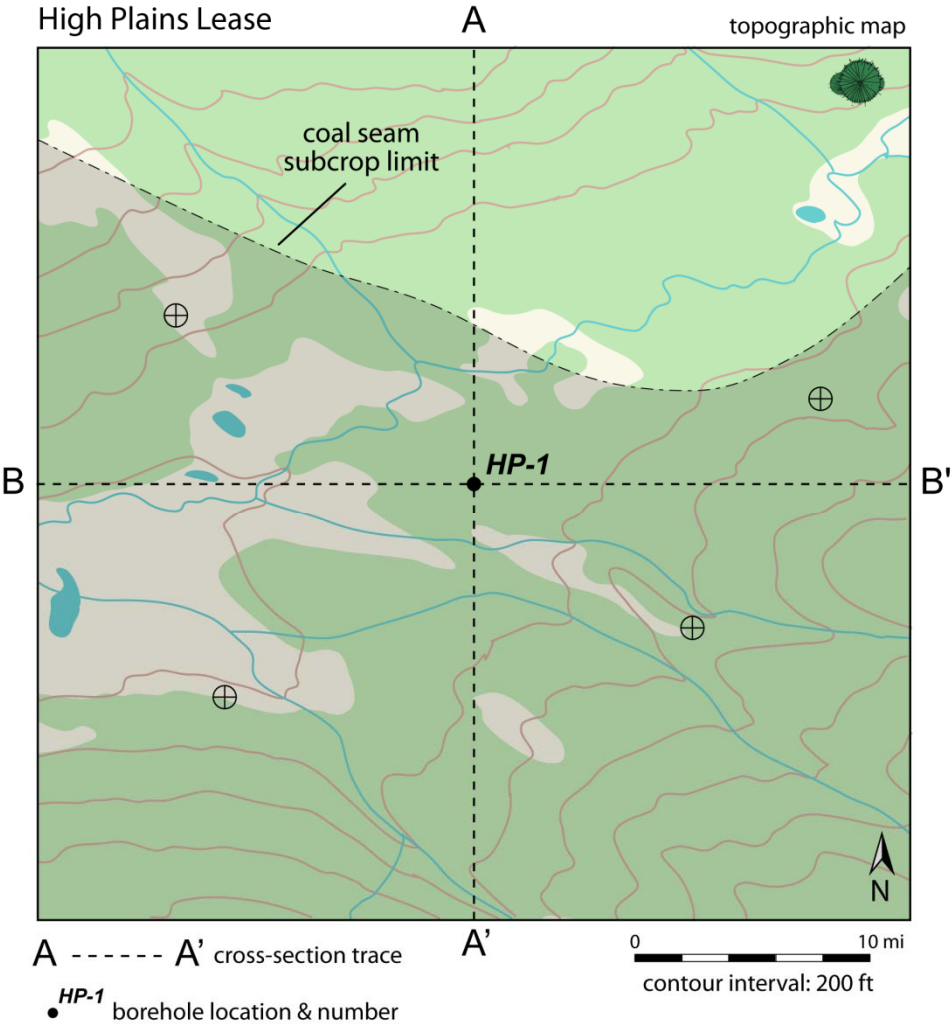
Coal: China, Energy and Kyoto
I. Evaluating Coal Leases for Potential Mining

James D. Myers
Department of Geology & Geophysics
University of Wyoming

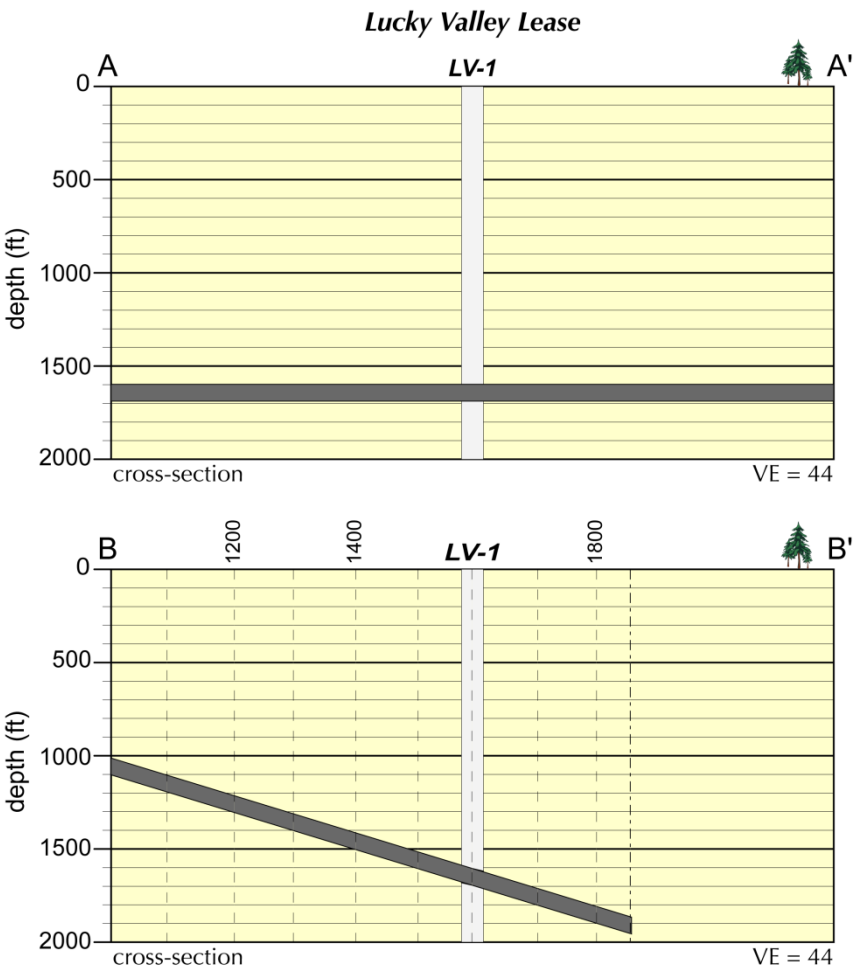
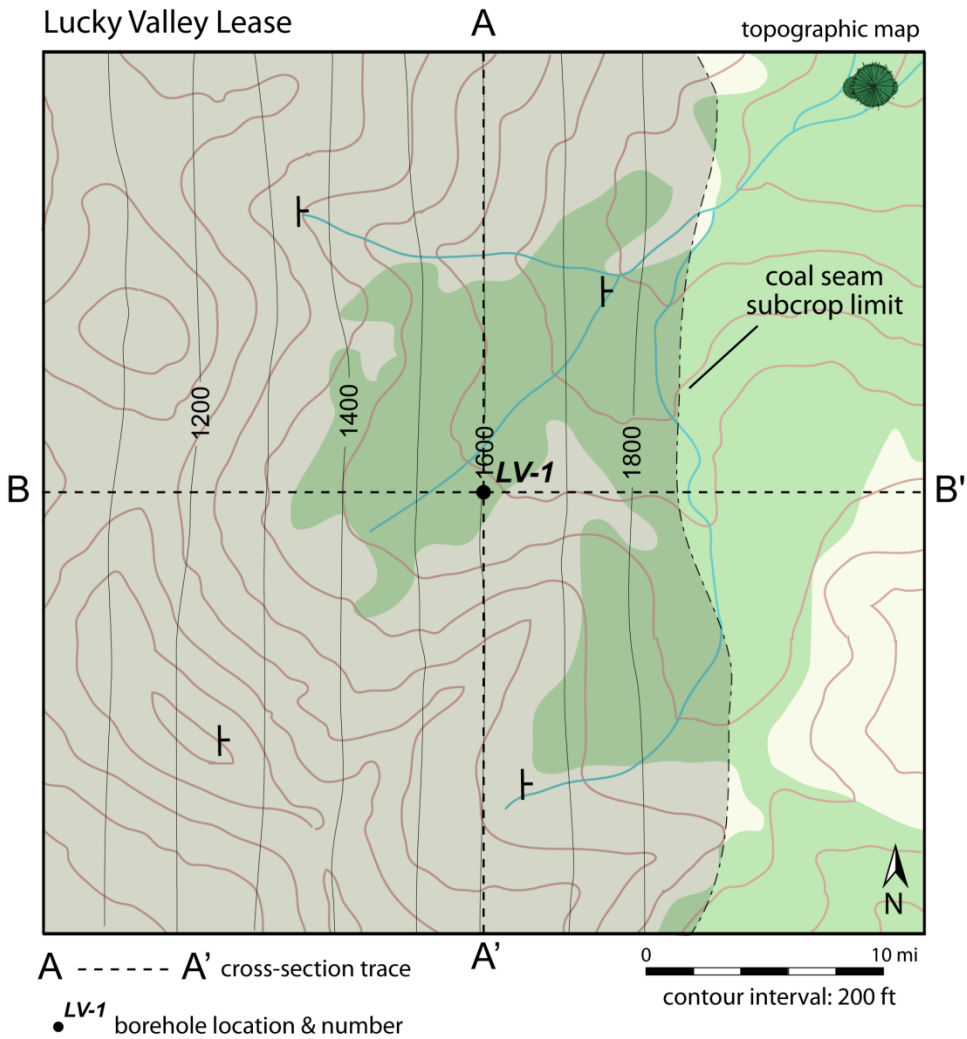
Phone: 307-766-2203
Email: magma@uwyo.edu



				proximate				ultimate		
lease	seam	rank		Btu/lb	ash (%)	moisture (%)		ΣS (%)	N (%)	C (%)
Floating Blossom		ant		13,950	1.0	6.5		3.2	1.5	93



					proximate				ultimate		
lease		seam		rank	Btu/lb	ash (%)	moisture (%)		ΣS (%)	N (%)	C (%)
High Plains				sub	9,575	0.8	0.9		0.6	0.5	77



					proximate				ultimate		
lease		seam		rank	Btu/lb	ash (%)	moisture (%)		ΣS (%)	N (%)	C (%)
Lucky Valley				ant	14,570	0.9	1.0		2.1	1.2	97